



TABLE OF CONTENTS

DIVISION OF NAVAL INTELLIGENCE—IDENTIFICATION AND CHARACTERISTICS SECTION—FEBRUARY, 1943

ONI 202

CHARTS

1. PANORAMA OF THE ITALIAN NAVY
2. CHARACTERISTICS OF ITALIAN NAVY VESSELS
3. "DAGO DOGGEREL"
4. MISTAKEN IDENTITY
5. ITALIAN NAVAL ORDNANCE
6. ITALIAN AIRCRAFT
7. ITALIAN RAIDERS
8. ITALIAN RECOGNITION MARKINGS AND SIGNALS

LIST OF NAVAL VESSELS BY DESIGN CLASSES
HISTORY OF THE ITALIAN NAVY

SHIP JACKETS

- BB 2-4 CAVOUR CLASS
BB 5, 6 DORIA CLASS
BB 11-14 LITTORIO CLASS
- CA 2 TRIESTE
CA 5 GORIZIA
CA 7 BOLZANO
- CL 4 TARANTO
CL 8 BARI
CL 13 CADORNA
CL 15, 16 MONTECUCCOLI CLASS
CL 17, 18 EUGENIO DI SAVOIA CLASS
CL 19, 20 GARIBALDI CLASS
CL 21, 22 CIANO CLASS
CL 23-34 REGOLO CLASS
CL 35, 36 "SIAMESE" CLASS
OCL EX-YUGOSLAV
- DD 11-18 ABBA CLASS
DD 19 AUDACE
DD 20-23 SIRTORI CLASS
DD 24-31 COSENZ CLASS

- DD 32-37 "GENERALE" CLASS
DD 53-55 MIRABELLO CLASS
DD 56-59 PALESTRO CLASS
DD 60-63 CURTATONE CLASS
DD 68-71 SELLA CLASS
DD 76-83 TURBINE CLASS
DD 84-95 "NAVIGATORE" CLASS
DD 96-99 DARDO CLASS
DD 100-103 FOLGORE CLASS
DD 104-107 GRECALE CLASS
DD 108-111 ORIANI CLASS
DD 112-123 AVIERE CLASS
DD 124-131 IMPROVED AVIERE CLASS
DD 132, 133 EX-YUGOSLAV
- SS 22-29 H-1 CLASS
SS 48-51 PISANI CLASS
SS 52-55 MAMELI CLASS
SS 56-59 BALILLA CLASS
SS 60 FIERAMOSCA
SS 61-64 SANTAROSA CLASS
SS 66 SETTIMO
SS 67-70 SQUALO CLASS
SS 71-77 ARGONAUTA CLASS
SS 78-89 SIRENA CLASS
SS 90-93 ARCHIMEDE CLASS
SS 95 OTARIA
SS 96-98 CALVI CLASS
SS 99-128 PERLA CLASS
SS 129, 130 ARGO CLASS
SS 131-133 GALVANI CLASS
SS 134-142 MARCELLO CLASS
SS 143-146 BAGNOLINI CLASS
SS 147-152 MARCONI CLASS
SS 153-160 CAPPELINI CLASS
SS 161-170 ST. BON CLASS
SS 171-176 ACCIAIO CLASS

- SM 2, 3 X-2 CLASS
SM 4, 5 CORRIDONI CLASS
SM 6 PIETRO MICCA
SM 7-9 FOCA CLASS
PG 5 ERITREA
- OCM 3-5 ALBONA CLASS
OCM 6, 7 COTRONE CLASS
OCM 8-11 BUCCARI CLASS
OCM 12-17 OSTIA CLASS
- AM 1-58 R. D. 4 CLASS
AM 59, 60 VEDETTA CLASS
- TB 4 GIOVANNINI
TB 8-11 ORSA CLASS
TB 12-27 SPICA CLASS
TB 28-43 PARTENOPE CLASS
TB 44-47
- PT 204-551 M.A.S. CLASSES
PY 1-3 AURORA, SAVOIA, ILLIRIA
AV 1 MIRAGLIA
AS CABOTO, VOLTA CLASS
ASR ANTEO, TITANO
AR QUARNARO
ARS TESEO, CICLOPE
AO-AOG MISCELLANEOUS
AW CITTA DI SIRACUSA
AWK MISCELLANEOUS
AP MISCELLANEOUS
AT MISCELLANEOUS
AG-AGS MISCELLANEOUS
TRAWLERS MISCELLANEOUS
MISCELLANEOUS EX-YUGOSLAV SEIZURES
- AERIAL VIEWS**
STEREOPTICON VIEWS
PHOTOGRAPHIC ADDENDA
AMENDMENTS



ITALIAN NAVAL VESSELS — LIST BY DESIGN CLASSES

NOTE—WHERE TWO OR MORE VESSELS ARE KNOWN TO BE BUILT TO A COMMON DESIGN, THEY ARE GROUPED UNDER THE NAME SHIP OF THE CLASS.

—VESSELS NOT SO GROUPED EITHER HAVE NO, OR ARE NOT KNOWN TO HAVE, ANY SISTERS.

—NO NOTATION INDICATES AVAILABLE VESSELS, OTHER NOTATIONS ARE SELF-EXPLANATORY.

PRINCIPAL COMBATANT TYPES

BATTLESHIPS

BB1 DANTE (EX-DANTE ALIGHIERI), REMOVED FROM LIST

CAVOUR CLASS:

BB2 CONTE DI CAVOUR
BB3 GIULIO CESARE
BB4 LEONARDO DA VINCI DESTROYED

DORIA CLASS:

BB5 ANDREA DORIA
BB6 CAIO DUILIO

CARACCIOLO CLASS:

BB7 A. CARACCIOLO NEVER COMPLETED
BB8 M. COLONNA NEVER COMPLETED
BB9 C. COLOMBO NEVER COMPLETED
BB10 F. MOROSINI NEVER COMPLETED

LITTORIO CLASS:

BB11 LITTORIO
BB12 VITTORIO VENETO
BB13 IMPERO
BB14 ROMA

HEAVY CRUISERS

TRENTO CLASS:

CA1 TRENTO LOST
CA2 TRIESTE

ZARA CLASS:

CA3 ZARA LOST
CA4 FIUME LOST
CA5 GORIZIA
CA6 POLA LOST
CA7 BOLZANO

LIGHT CRUISERS

CL1 QUARTO REMOVED FROM LIST

NINO BIXIO CLASS:

CL2 NINO BIXIO REMOVED FROM LIST
CL3 MARSALA REMOVED FROM LIST

CL4 TARANTO (EX-GERMAN STRASBOURG)

VENEZIA CLASS:

CL5 VENEZIA (EX-AUSTRIAN SAIDA), REMOVED FROM LIST
CL6 BRINDISI (EX-AUSTRIAN HELGOLAND), REMOVED FROM LIST
CL7 ANCONA (EX-GERMAN GRAUDENZ), REMOVED FROM LIST
CL8 BARI (EX-GERMAN PILLAU; EX-RUSSIAN MURAVIEV AMURSKI)

BANDE NERE CLASS:

CL9 GIOVANNI DELLE BANDE NERE LOST
CL10 ALBERTO DI GIUSSANO LOST
CL11 ALBERICO DA BARBANIO LOST
CL12 BARTOLOMEO COLLEONI LOST

CADORNA CLASS:

CL13 LUIGI CADORNA
CL14 ARMANDO DIAZ LOST

MONTECUCCOLI CLASS:

CL15 RAIMONDO MONTECUCCOLI
CL16 MUZIO ATTENDOLO

EUGENIO DI SAVOIA CLASS:

CL17 EUGENIO DI SAVOIA
CL18 EMANUELE FILIBERTO
DUCA D'AOSTA

GARIBALDI CLASS:

CL19 GIUSEPPE GARIBALDI
CL20 LUIGI DI SAVOIA DUCA
DEGLI ABRUZZI

CIANO CLASS:

CL21 AMMIRAGLIO COSTANZO CIANO BUILDING
CL22 VENEZIA NAME DOUBTFUL; STATUS DOUBTFUL

LIGHT CRUISERS (Continued)

REGOLO CLASS:

CL23	ATTILIO REGOLO	BUILDING
CL24	SCIPIONE AFRICANO	BUILDING
CL25	CAIO MARIO	BUILDING
CL26	CLAUDIO TIBERIO	BUILDING
CL27	PAOLO EMILIO	BUILDING
CL28	CORNELIO SILLA	BUILDING
CL29	OTTAVIANO AUGUSTO	REPORTED COMPLETED
CL30	POMPEO MAGNO	REPORTED COMPLETED
CL31	ULPIO TRAIANO	BUILDING
CL32	VIPSANIO AGRIPPA	BUILDING
CL33	CLAUDIO DRUSO	BUILDING
CL34	GIULIO GERMANICO	REPORTED COMPLETED

"SIAMESE" CLASS:

CL35	NO. 1	(EX-SIAMESE), REPORTED COMPLETED
CL36	NO. 2	(EX-SIAMESE), REPORTED COMPLETED

DESTROYERS

ARDENTE CLASS:

DD1	ARDENTE	REMOVED FROM LIST
DD2	ARDITO	REMOVED FROM LIST

ANIMOSO CLASS:

DD3	ANIMOSO	REMOVED FROM LIST
DD4	AUDACE	LOST

INDOMITO CLASS:

DD5	INDOMITO	REMOVED FROM LIST
DD6	IMPAVIDO	REMOVED FROM LIST
DD7	IMPETUOSO	LOST
DD8	INSIDIOSO	REMOVED FROM LIST
DD9	INTREPIDO	LOST
DD10	IRREQUIETO	REMOVED FROM LIST

ABBA CLASS:

DD11	GIUSEPPE CARLO ABBA	
DD12	FRATELLI CAIROLI	(EX-FRANCESCO NULLO)—LOST
DD13	ANTONIO MOSTO	
DD14	ROSOLINO PILO	
DD15	SIMONE SCHIAFFINO	
DD16	GIUSEPPE DEZZA	(EX-PILADE BRONZETTI)
DD17	GIUSEPPE MISSORI	
DD18	IPPOLITO NIEVO	REMOVED FROM LIST
DD19	AUDACE	(EX-JAPANESE KAWAKAZE)

SIRTORI CLASS:

DD20	GIUSEPPE SIRTORI	
DD21	FRANCESCO STOCCHO	LOST
DD22	GIOVANNI ACERBI	LOST
DD23	VINCENZO ORSINI	LOST

COSENZ CLASS:

DD24	EUGENIO COSENZ	(EX-AGOSTINO BERTANI)
DD25	ANGELO BASSINI	
DD26	GIACINTO CARINI	
DD27	GIUSEPPE LA MASA	
DD28	BENEDETTO CAIROLI	LOST
DD29	GIACOMO MEDICI	
DD30	GIUSEPPE LA FARINA	
DD31	NICOLA FABRIZI	

"GENERALE" CLASS:

DD32	GENERALE ACHILLE PAPA	
DD33	GENERALE ANTONIO CANTORE	
DD34	GENERALE ANTONINO CASCINO	
DD35	GENERALE ANTONIO CHINOTTO	
DD36	GENERALE CARLO MONTANARI	
DD37	GENERALE MARCELLO PRESTINARI	

CORTELLAZZO CLASS:

DD38	CORTELLAZZO	(EX-AUSTRIAN LIKA)—REMOVED FROM LIST
DD39	GRADO	(EX-AUSTRIAN TRIGLAN)—REMOVED FROM LIST
DD40	MONFALCONE	(EX-AUSTRIAN USZOK)—REMOVED FROM LIST
DD41	POLA	(EX-AUSTRIAN ORJEN)—REMOVED FROM LIST
DD42	FASANA	(EX-AUSTRIAN TATRA)—REMOVED FROM LIST
DD43	MUGGIA	(EX-AUSTRIAN CSEPEL)—WRECKED
DD44	ZENSON	(EX-AUSTRIAN BALATON)—REMOVED FROM LIST
DD45	ARDIMENTOSO	(EX-GERMAN S63)—REMOVED FROM LIST
DD46	CESARE ROSSAROL	(EX-GERMAN B97)—REMOVED FROM LIST

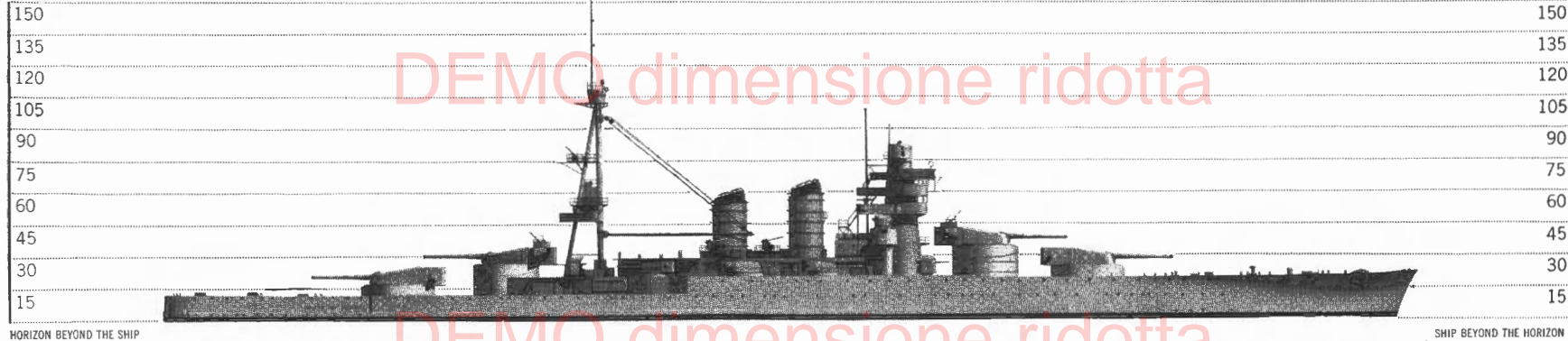
AQUILA CLASS:

DD47	AQUILA	(EX-ROUMANIAN VIJELIE)—SOLD TO SPAIN
DD48	FALCO	(EX-ROUMANIAN VIFOR)—SOLD TO SPAIN
DD49	NIBBIO	(EX-ROUMANIAN VISCOL)—SOLD TO ROUMANIA
DD50	SPARVIERO	(EX-ROUMANIAN VARTEZ)—SOLD TO ROUMANIA

POERIO CLASS:

DD51	ALESSANDRO POERIO	SOLD TO SPAIN
DD52	GUGLIELMO PEPE	SOLD TO SPAIN

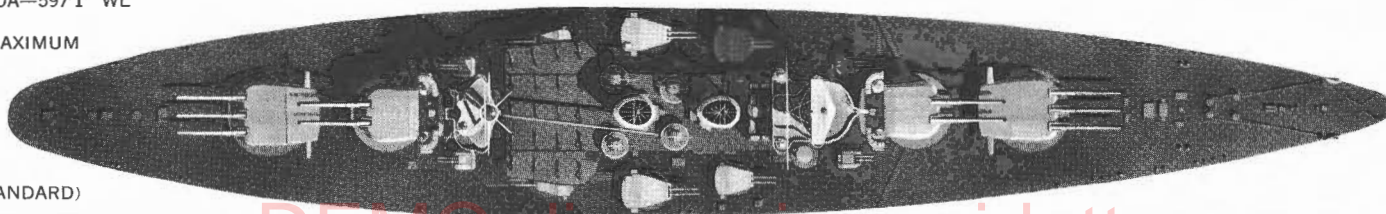
HEIGHT OF OBSERVER



HORIZON BEYOND THE SHIP

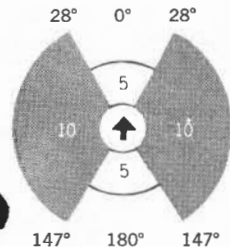
SHIP BEYOND THE HORIZON

LENGTH—611'7" OA—597'1" WL
 BEAM— 91'10"
 DRAFT— 32'6" MAXIMUM



DISPLACEMENT
 23,622 TONS (STANDARD)

DENSITY OF FIRE
 MAIN BATTERY



ARMAMENT

	MAX. ELEV.	RANGE
10-12 ⁶ TRIPLE, DOUBLE TURRETS	25°	31,000 YD.
12- 4 ⁷ TWIN TURRETS	45°	19,000 YD.
8- 3 ⁹ AA TWIN MOUNTS	90°	
4 SCOUT OBSERVATION PLANES		

PROTECTION

BELT—	9 ³ / ₄ " —8"; 5" ENDS
TURRETS—	11" ? BARBETTES—9 ¹ / ₂ "
CONNING TOWER—	11" ? DECK—3"

PROPULSION

MACHINERY—	BELLUZZO	FUEL—	OIL, 2,000 TONS
BOILERS—	EIGHT, 3 DRUM TYPE	DES SPEED—	27 KNOTS
DES HP—	75,000	ENDURANCE—	1,700 @ 24 KNOTS
			4,500 @ 10 KNOTS



CAVOUR CLASS



CONTE DI CAVOUR—BB 2



GIULIO CESARE—BB 3



CAVOUR CLASS—BB 2, 3

DIVISION OF NAVAL INTELLIGENCE—IDENTIFICATION AND CHARACTERISTICS SECTION—FEBRUARY, 1943

CONTE DI CAVOUR—BB 2
GIULIO CESARE— BB 3

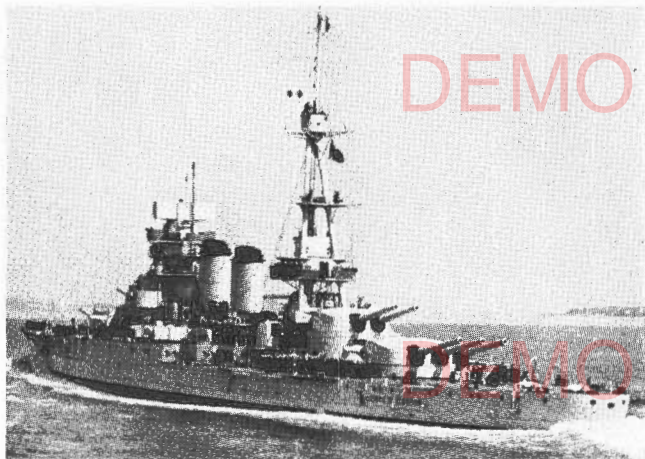
BEGUN
8/10/10
6/23/10

COMPLETED
1/1915
11/29/13

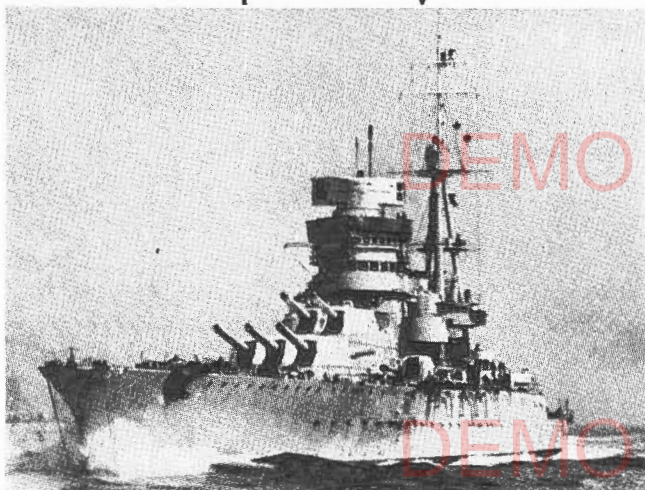
RECONSTRUCTED
1933-1937
1933-1937

ONI 202

RESTRICTED



↑ CAVOUR 1939 ↓

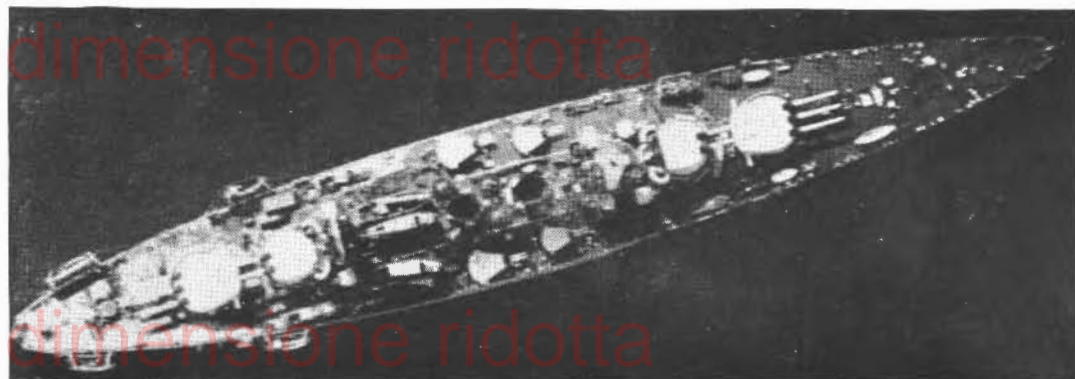


↑ CESARE 1938

CAVOUR 1938 ↓



CAVOUR 1941 ↓

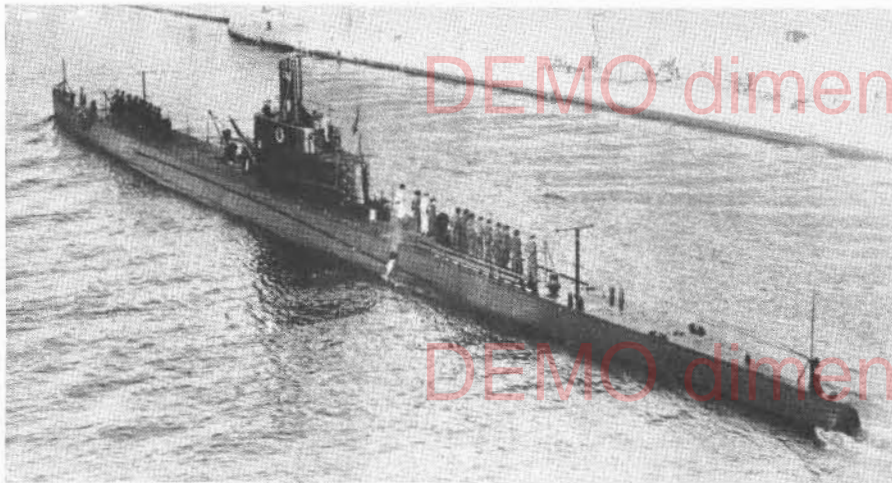




SS 65-70

DIVISION OF NAVAL INTELLIGENCE—IDENTIFICATION AND CHARACTERISTICS SECTION—JANUARY, 1943

ONI 202



SETTEMBRINI CLASS—SS 65, 66

LENGTH— 226'9" OA—225'3" WL
 BEAM— 25'4"
 DRAFT— 13' (MAXIMUM)

DISPLACEMENT—797 TONS (STANDARD)—883/1134 TONS (NORMAL)

ARMAMENT

1-4" (35)
 2-.52" AAMG
 8-21" TORPEDO TUBES

PROPULSION

MACHINERY— TWO TOSI DIESELS
 FUEL— OIL
 DESIGNED HP— 3000/1400
 DESIGNED SPEED—17.5/9 KNOTS
 ENDURANCE— 9000 @ 8/72 @ 4 KNOTS

	BEGUN	COMPLETED
LUIGI SETTEMBRINI—SS 65		WAR LOSS
RUGGIERO SETTIMO—SS 66	6/16/28	12/25/31



SQUALO CLASS—SS 67-70

LENGTH— 229' OA—227'4" WL
 BEAM— 23'8"
 DRAFT— 16'2" (MAXIMUM)

DISPLACEMENT—810 TONS (STANDARD)—871/1077 TONS (NORMAL)

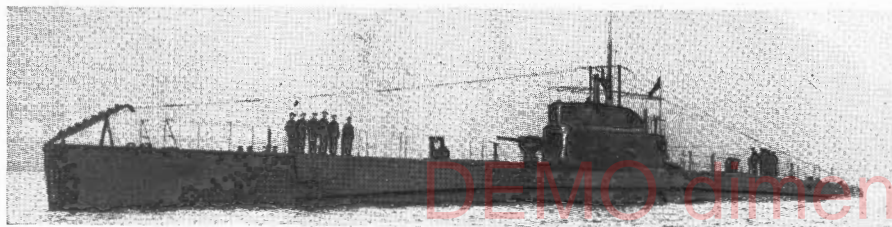
ARMAMENT

1-4" (35)
 2-.52" AAMG
 8-21" TORPEDO TUBES

PROPULSION

MACHINERY— TWO SETS FIAT DIESELS
 FUEL— OIL
 DESIGNED HP— 3000/1400
 DESIGNED SPEED—16.5/9 KNOTS
 ENDURANCE— 9000 @ 8/72 @ 4 KNOTS

	BEGUN	COMPLETED
SQUALO—SS 67	10/10/28	10/11/30
DELFINO—SS 68	10/27/28	6/19/31
NARVALO—SS 69	10/17/28	12/7/30
TRICHECO—SS 70	11/10/28	6/25/31





ARGONAUTA CLASS—SS 71-77

LENGTH— 201'9" OA—200'6" WL BEAM—18'10" DRAFT—14'5" (MAXIMUM)

DISPLACEMENT—599 TONS (STANDARD)—627/778 TONS (NORMAL)

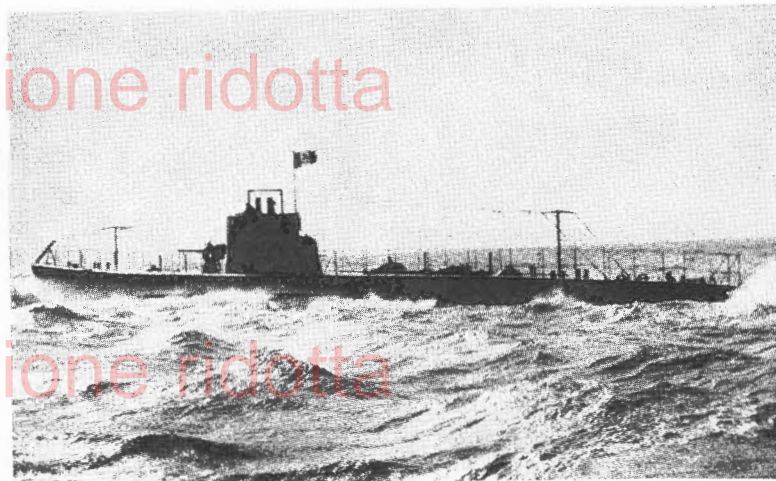
ARMAMENT

1-4" (35) 2-.52" AAMG
6-21" TORPEDO TUBES (4 BOW, 2 STERN) 8 TORPEDOES CARRIED

PROPULSION

MACHINERY— TWO SETS FIAT DIESELS
FUEL— OIL ENDURANCE— 4,000 @ 9/80 @ 4
DESIGNED HP—1,200/800 DESIGNED SPEED—14/8.5 KNOTS

	BEGUN	WAR LOSS	COMPLETED
ARGONAUTA—SS 71		WAR LOSS	
FISALIA— SS 72		WAR LOSS	
MEDUSA— SS 73		WAR LOSS	
SERPENTE— SS 74	4/23/30		11/10/32
SALPA— SS 75		WAR LOSS	
JALEA— SS 76	1/20/30		3/16/33
JANTINA— SS 77		WAR LOSS	



SIRENA CLASS—SS 78-89

LENGTH— 197'5" OA—194'4" WL BEAM—21'2" DRAFT—13'11" (MAXIMUM)

DISPLACEMENT—591 TONS (STANDARD)—?/787 TONS (NORMAL)

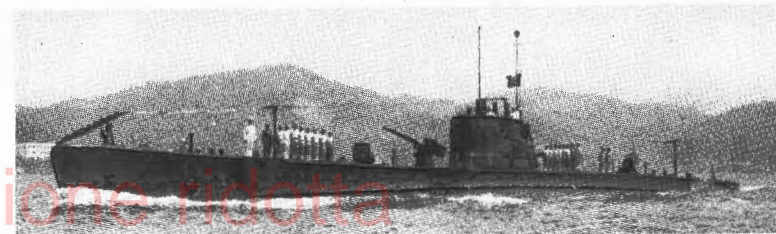
ARMAMENT

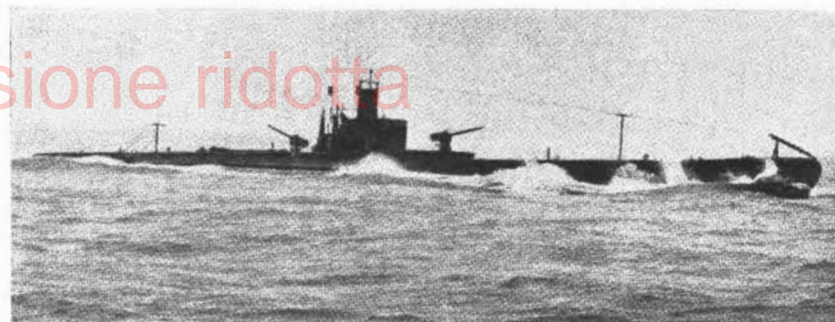
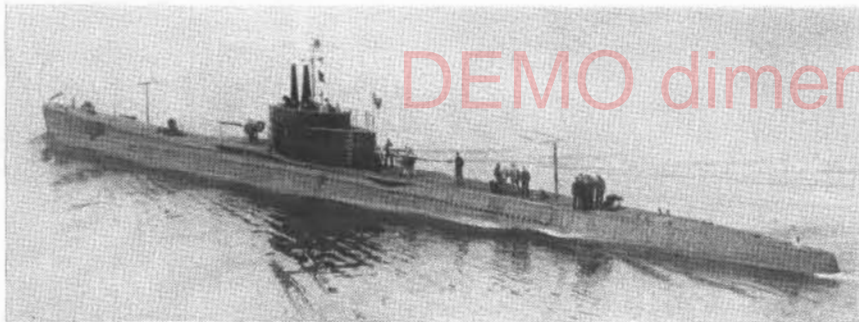
1-3"9 (47) 2-.52" AAMG
6-21" TORPEDO TUBES

PROPULSION

MACHINERY— TWO SETS FIAT DIESELS
FUEL— OIL ENDURANCE— 4,000 @ 9/80 @ 4
DESIGNED HP—1,350/800 DESIGNED SPEED—14/8.5 KNOTS

	BEGUN	COMPLETED		BEGUN	COMPLETED
SIRENA— SS 78	WAR LOSS		NEREIDE— SS 84	WAR LOSS	
NAIADE— SS 79	WAR LOSS		SMERALDO—SS 85	5/25/31	11/29/33
RUBINO— SS 80	WAR LOSS		ZAFFIRO— SS 86	9/16/31	6/ 4/34
AMETISTA— SS 81	9/16/31	4/ 1/34	ANFITRITE— SS 87	WAR LOSS	
TOPAZIO— SS 82	9/26/31	4/28/34	GALATEA— SS 88	7/18/31	6/25/34
DIAMANTE—SS 83	WAR LOSS		ONDINA— SS 89	WAR LOSS	





ARCHIMEDE CLASS—SS 90-93

LENGTH—231'4" OA—228'11" WL

BEAM— 22'6"

DRAFT— 19'7" (MAXIMUM)

DISPLACEMENT—896/1255 TONS

ARMAMENT

1-3"9 (43)

4-.52" AAMG (TWIN)

8-21" TORPEDO TUBES

10 TORPEDOES CARRIED

PROPULSION

MACHINERY— TWO TOSI DIESELS

FUEL— OIL

DESIGNED HP— 3000/?

DESIGNED SPEED—17/8.5 KNOTS

ENDURANCE— 8000 @ ?

	BEGUN	COMPLETED
ARCHIMEDE—	SS 90	10/1/31
GALILEO GALILEI—	SS 91	8/1/34
GALILEO FERRARIS—	SS 92	CAPTURED BY BRITISH
EVANGELISTA TORRICELLI—	SS 93	WAR LOSS

DEMO dimensione ridotta

DEMO dimensione ridotta

DEMO dimensione ridotta

DEMO dimensione ridotta

GLAUCO CLASS—SS 94, 95

LENGTH—239'6" OA—233'1" WL

BEAM— 23'7"

DRAFT— 15'10" (MAXIMUM)

DISPLACEMENT—863 TONS (STANDARD)—935/1167 TONS (NORMAL)

ARMAMENT

2-3"9 (47)

2-.52" AAMG

8-21" TORPEDO TUBES

PROPULSION

MACHINERY— TWO FIAT DIESELS

FUEL— OIL

DESIGNED HP— 3000/1040

DESIGNED SPEED—17/8.5 KNOTS

ENDURANCE—8500 @ 8/72 @ 4

	BEGUN	COMPLETED
GLAUCO—SS 94		WAR LOSS
OTARIA—SS 95	10/12/31	10/?/35

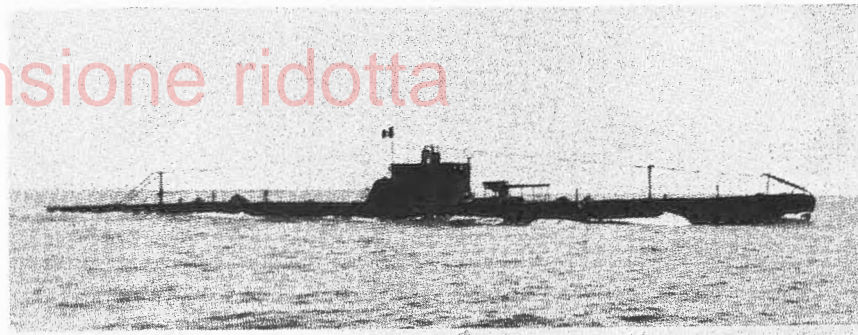
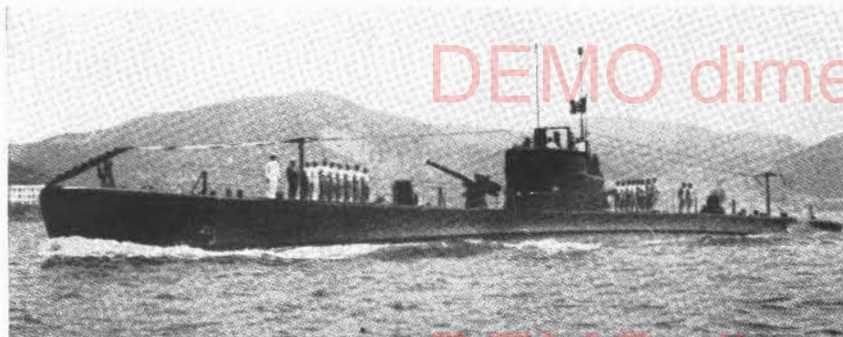
MAX. ELEV. RANGE

BEGUN COMPLETED

WAR LOSS

10/12/31

10/?/35



PERLA—	SS 99	LOST
GEMMA—	SS 100	LOST
AMBRA—	SS 101	
BERILLO—	SS 102	LOST
ONICE—	SS 103	
DIASPRO—	SS 104	
MALACHITE—	SS 105	
TURCHESE—	SS 106	
IRIDE—	SS 107	LOST
CORALLO—	SS 108	
ADUA—	SS 109	LOST
AXUM—	SS 110	
ARADAM—	SS 111	
ALAGI—	SS 112	
DAGABUR—	SS 113	
DESSIE—	SS 114	
NEGHELLI—	SS 115	SOLD TO BRAZIL
GONDAR—	SS 116	SOLD TO BRAZIL
MACALLE—	SS 117	LOST
ASCIANGHI—	SS 118	SOLD TO BRAZIL
UARSCEK—	SS 119	
UEBI SCEBELI—	SS 120	LOST
GONDAR—	SS 121	LOST
NEGHELLI—	SS 122	LOST
ASCIANGHI—	SS 123	
SCIRE—	SS 124	
TEMBIEN—	SS 125	LOST
DURBO—	SS 126	LOST
LAFOLE—	SS 127	LOST
BEILUL—	SS 128	

DEMO dimensione ridotta

DEMO dimensione ridotta

DEMO dimensione ridotta

DEMO dimensione ridotta

BEGUN	COMPLETED
8/ /35	7/ /36
8/ /35	8/ /36
8/ /35	9/ /36
9/ /35	8/ /36
8/ /35	11/ /36
9/ /35	9/ /36
10/ /35	9/ /36
2/ /36	12/ /36
2/ /36	1/ /37
2/ /36	3/ /37
4/ /36	4/10/37
4/ /36	4/14/37
12/ /36	12/ /37
1/ /37	7/ /38
1/ /37	8/ /38
7/ /37	9/16/38

DIMENSIONS— 197'5" OA, 194'8" WL x 21'2" x 14'7" (MEAN)
 DISPLACEMENT—620 TONS STANDARD/ 855 TONS NORMAL
 ARMAMENT— 1-3"9 MAX. ELEV. RANGE
 2 AAMG
 6-21" TORPEDO TUBES (4 FORWARD, 2 AFT)
 6 TORPEDOES
 PROPULSION
 MACHINERY— FUEL— OIL
 DESIGNED HP— 1350/800 DESIGNED SPEED—14/8.5 KNOTS
 ENDURANCE— 4,000 @ 9/80 @ 4

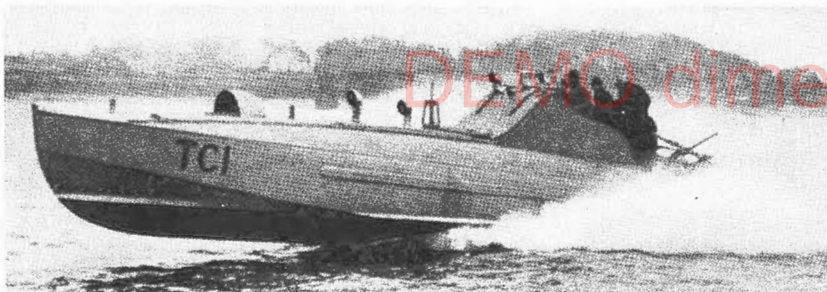




SEIZURES (EX-YUGOSLAV)

DIVISION OF NAVAL INTELLIGENCE—IDENTIFICATION AND CHARACTERISTICS SECTION —FEBRUARY, 1943

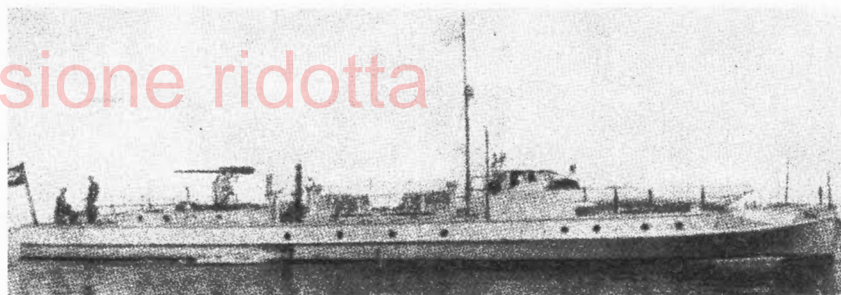
ONI 202



PT BC-1, 2—1927

DIMENSIONS— 59'1" OA x 10'10" x 3'11" (MEAN)
DISPLACEMENT—13 TONS (STANDARD)
ARMAMENT— 1 AAMG 2-18" TORPEDO TUBES 4 DEPTH CHARGES

4 BUILDING, UNREPORTED—DIMENSIONS— 91'10" OA x 14'1" x 4'11" (MEAN)
DISPLACEMENT—120 TONS (STANDARD) E
ARMAMENT— 1-1'57 4-21" TORPEDO TUBES 12 DEPTH CHARGES 4 MINES



***PT RUDNIK CLASS—1936-37**

RUDNIK, ORJEN, VELEBIT, DINARA, TRIGLAV, SUUOBOR

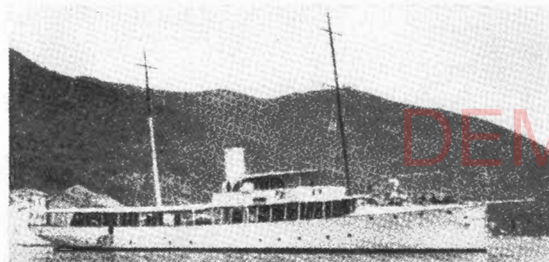
DIMENSIONS— 91'10" WL x 14'1" x 4'11" (MEAN)

DISPLACEMENT—61.7 TONS (STANDARD)

ARMAMENT— 1-1'57 AA 4-21'7 TORPEDO TUBES

12 DEPTH CHARGES 4 MINES

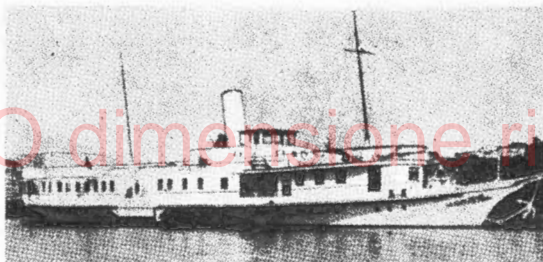
DESIGNED HP— 2850 DESIGNED SPEED—34 KNOTS



PY VILA—1896

LENGTH— 134'6" OA

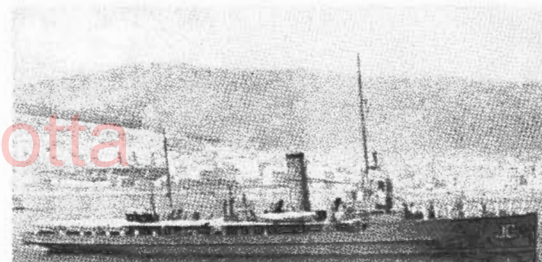
DISPLACEMENT—230 TONS (STANDARD)



PY DRAGOR—1928

LENGTH— 164' OA

DISPLACEMENT—246 TONS (STANDARD)



CM (EX-GERMAN M-CLASS)—1918-19

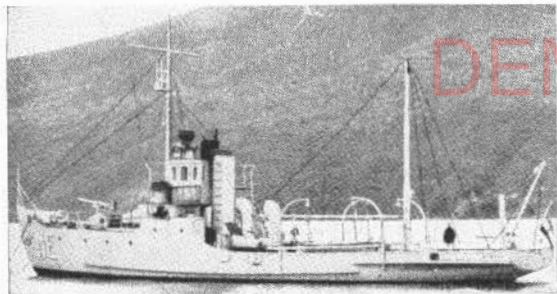
CALEB, LABUD, JASTREB

DIMENSIONS— 185'4" OA x 23'7" x 7'2" (MEAN)

DISPLACEMENT—330 TONS (STANDARD)

ARMAMENT— 2-3'9 DP
2 AAMG
40 MINES

DEMO dimensione ridotta



AM—ARBE (Ex-MALINSKA)—1931-32

DIMENSIONS— 174'0" OA x 26'3" x 13'0" (MEAN)

DISPLACEMENT—128 TONS (STANDARD)

ARMAMENT— 1-2.5 (30) AA
40 MINES

OTB—T-3, 5, 6, 7

(Ex-Austrian)—1913-15

DIMENSIONS—

188'4" OA x 18'8"

x 7'3" (MEAN)

T-3→

DISPLACEMENT—

200 TONS (STANDARD)

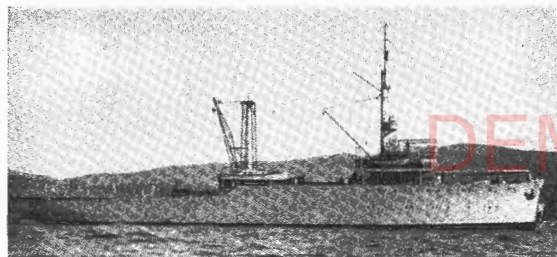
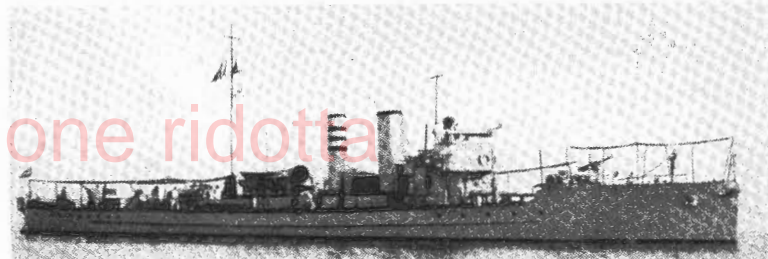
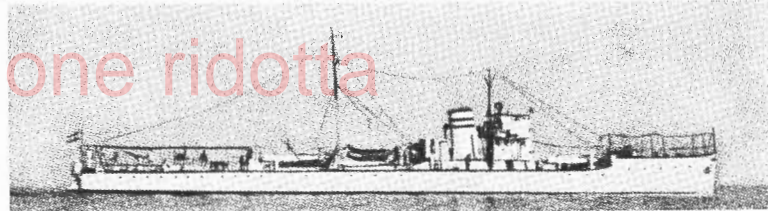
ARMAMENT—

2-2.5 (30) AA

2 AAMG

2-21" TORPEDO TUBES

T-5→



AV—ZMAJ—1929

DIMENSIONS— 249'4" OA x 42'8" x 11'6" (MEAN)

DISPLACEMENT—1,870 TONS (STANDARD)

ARMAMENT— 1-4" (45) AA—10 FLOATPLANES

DES HP— 3000

DES SPEED—15 KNOTS

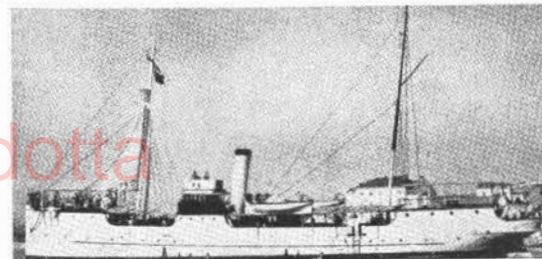


AS—HVAR—1896. REBUILT, 1927

DIMENSIONS— 318'3" OA x 39'4" x 13'1" (MEAN)

DISPLACEMENT—1,870 TONS (STANDARD)

REPORTED IN ITALIAN SERVICE AS—AP OR AH



AS—SITNICA—1891. REBUILT, 1929

DIMENSIONS— 157'6" OA x 23'0" x 6'7" (MEAN)

DISPLACEMENT—370 TONS (STANDARD)

ARMAMENT— 2-3 PDR.

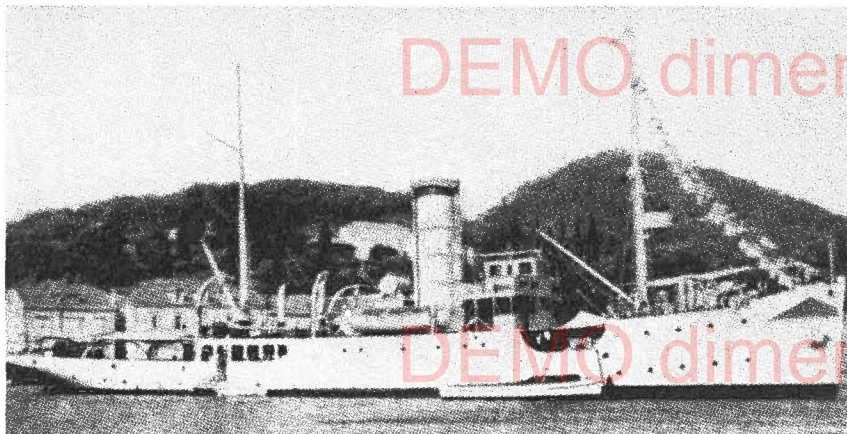
THESE SHIPS MAY BE EMPLOYED AS WATER CARRIERS



SEIZURES (EX-YUGOSLAV)

DIVISION OF NAVAL INTELLIGENCE—IDENTIFICATION AND CHARACTERISTICS SECTION—FEBRUARY, 1943

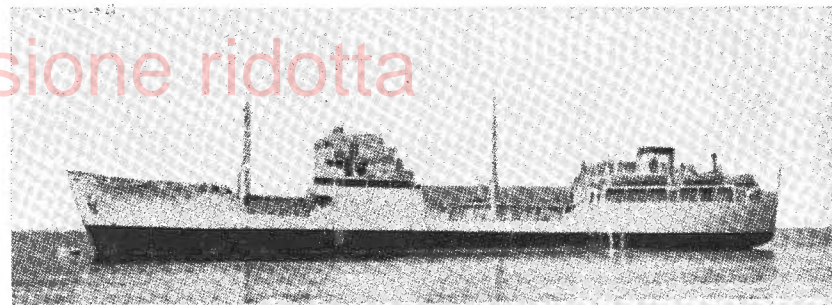
ONI 202



AR SPASILAC—1930

DIMENSIONS— 173'11" OA x 26'3" x 13'1" (MEAN)

DISPLACEMENT—740 TONS (STANDARD)



AO PERUN—1940

DIMENSIONS— 311'6" OA x 45'6" x 20'0" (MEAN)

DISPLACEMENT—4,000 TONS (STANDARD)

ARMAMENT— 4-1'57 AA 2 AAMG

DESIGNED HP— 1,250 DESIGNED SPEED—10 KNOTS

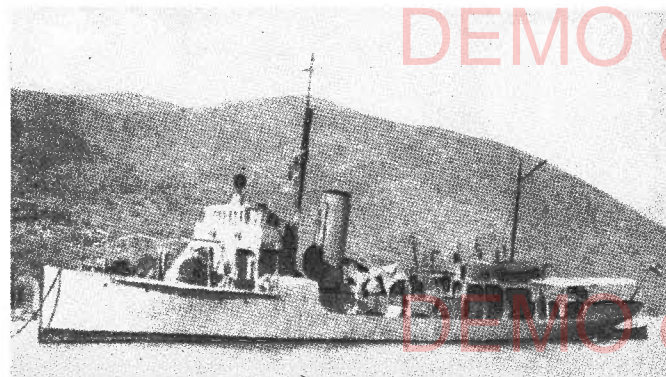
DEADWEIGHT CAPACITY—3,000 TONS

AG JADRAN—1933

LENGTH— 190'3" OA

DISPLACEMENT—709 TONS (STANDARD)

THREE-MASTED TOPSAIL SCHOONER USED AS TRAINING SHIP



AT

SILNI—1914

LENGTH— 114'9" OA

DISPLACEMENT—197 TONS

ARMAMENT— 2-1'85

←JAKI—1915

LENGTH— 131'3" OA

DISPLACEMENT—364 TONS

ARMAMENT— 2-1'85

MOCNI—1939

LENGTH— 108'3" OA

DISPLACEMENT—256 TONS

ARMAMENT— 2-1'85

USTRAJNI, MARLJIVI, SNAZNI—FOR HARBOUR USE

CER, VELEBIT, SISAK, SAGAK—FOR DANUBE RIVER SERVICE

MISCELLANEOUS—DUBRAVKA, LASTAVIKA, SRBIJA

SCHOOL SHIPS UNDER 100 TONS, UNREPORTED