

INTRODUCTION

ONI 226—Allied Landing Craft and Ships—is designed to facilitate recognition of and to make available pertinent data regarding the characteristics of United States and British vessels which may engage in amphibious operations.

★

Information of a nontechnical nature necessary for the recognition and use of landing craft, ships, and vehicles is provided in condensed form. Figures given are based on the best obtainable information. Experience has shown, however, that speed, endurance, and similar characteristics of these vessels may vary under operational conditions, and data given here should not be accepted when in conflict with experience in the field.

★

The following general principles form the basis for names and designated letters used in connection with equipment described herein.

(a) The term Landing Craft is generally applied to non-oceangoing vessels of less than 150 feet length over-all, designed for use in landing operations. The designation LC (Landing Craft) is therefore used, with appropriate modification to indicate particular types.

(b) At the date of issue of this publication, oceangoing vessels of over 200 feet length over-all, specifically designed for landing operations, fall within the category of Landing Ships. LS is used as a prefix in special designations of these types.

(c) Small units used in landing operations which are capable of use on land or water are known as Landing Vehicles. The letters LV are used as a prefix for all designations referring to these types.

★

It will be noted that a number of type names, on which no data is given, are listed within the various categories. These type names have been officially established for vessels which are in either the design or the construction stage. As further information becomes available, it will be forwarded to holders of ONI 226.

Suggestions for improvement or changes should be transmitted to the Division of Naval Intelligence.

NAVY DEPARTMENT

Office of the Chief of Naval Operations

Washington

7 April 1944

1. ONI 226—Allied Landing Craft and Ships—supersedes FTP-207—Characteristics of British and United States Landing Craft, Landing Ships, and Landing Vehicles. It is issued for the use of United States and British units and personnel engaged in amphibious operations.

2. Holders of ONI 226 will safeguard the security of this publication in accordance with the provisions of Article 76, U. S. Navy Regulations. When no longer required, this publication will be destroyed by burning. No report of destruction is required.



R. E. Schuirmann
Rear Admiral, U. S. Navy
Director of Naval Intelligence

DECLASSIFIED - OPNAV INST 5500.30
BY J. Kew DATE 7-14-80

LIST OF DESIGNATIONS

Publication and Distribution Branch—Division of Naval Intelligence

Abbreviated Designation	Full Designation	Former Designation	Abbreviated Designation	Full Designation	Former Designation
CRAFT			SHIPS		
LCA	Landing Craft, Assault	ALC	LSB	Landing Ship, Bombardment	
LCA(HR)	Landing Craft, Assault (Hedgerow)		LSC	Landing Ship, Carrier (Derrick-Hoisting)	
LCC	Landing Craft, Control		LSD	Landing Ship, Dock	
LCE	Landing Craft, Emergency Repair		LSE	Landing Ship, Emergency Repair	
LCF	Landing Craft, Flak	BPC	LSF	Landing Ship, Fighter Direction	
LCG	Landing Craft, Gun		LSG	Landing Ship, Gantry	
LCH	Landing Craft, Headquarters		LSH	Landing Ship, Headquarters	
LCI	Landing Craft, Infantry	Giant Raiding Craft, APY	LSI	Landing Ship, Infantry	
		MLC, TL, WL	LSI(H)	Landing Ship, Infantry (Hand-Hoisting)	
LCM	Landing Craft, Mechanized		LSM	Landing Ship, Medium	
LCN	Landing Craft, Navigational		LSP	Landing Ship, Personnel	
LCP	Landing Craft, Personnel	28' RC, CRC, R Craft, Y, T	LSS	Landing Ship, Stern-chute	
		LCP(P)	LST	Landing Ship, Tank	
LCP(N)	Landing Craft, Personnel (Nested)		LSV	Landing Ship, Vehicle	
LCP(R)	Landing Craft, Personnel (Ramped)		BARGES		
LCP(SY)	Landing Craft, Personnel (Survey)		LBE	Landing Barge, Emergency Repair	
LCP(U)	Landing Craft, Personnel (Utility)		LBF	Landing Barge, Flak	LBG, LBS
LCR	Landing Craft, Rubber		LBK	Landing Barge, Kitchen	
LCS	Landing Craft, Support	LSC, HSC	LBO	Landing Barge, Oiler	
LCS(R)	Landing Craft, Support (Rocket)		LBW	Landing Barge, Water	
LCT	Landing Craft, Tank	TLC, MTL	LBV	Landing Barge, Vehicle	AA, BB, CC
LCT(A)	Landing Craft, Tank (Armored)		VEHICLES		
LCT(R)	Landing Craft, Tank (Rocket)		LVT	Landing Vehicle, Tracked	
LCV	Landing Craft, Vehicle	VLC, YR, TR	LVT(A)	Landing Vehicle, Tracked (Armored)	
LCVP	Landing Craft, Vehicle Personnel				
LCW	Landing Craft, Air Propelled				

101, 138

PERSONNEL LANDING CRAFT

		Builder
*LCA	Landing Craft, Assault	UK
LCI(S)	Landing Craft, Infantry (Small)	UK
*LCI(L)	(Large)	US
LCP(1)	Landing Craft, Personnel (Mark 1)	UK
LCP(2)	(Mark 2)	UK
LCP(S)	(Small)	UK
LCP(M)	(Medium)	UK
*LCP(L)	(Large)	US
LCP(N)	(Nested)	US
*LCP(R)	(Ramped)	US
LCP(U)	(Utility)	UK
*LCR(S)	Landing Craft, Rubber (Small)	US
*LCR(L)	(Large)	US
LCW	Landing Craft, Air Propelled	UK

VEHICLE AND TANK LANDING CRAFT

LBV(1)	Landing Barge, Vehicle (Mark 1)	UK
LBV(2)	(Mark 2)	UK
LCM(1)	Landing Craft, Mechanized (Mark 1)	UK
LCM(2)	(Mark 2)	US
*LCM(3)	(Mark 3)	US
LCM(4)	(Mark 4)	UK
LCM(5)	(Mark 5)	UK
LCM(6)	(Mark 6)	US
LCM(7)	(Mark 7)	UK
LCT(1)	Landing Craft, Tank (Mark 1)	UK
LCT(2)	(Mark 2)	UK
LCT(3)	(Mark 3)	UK
LCT(4)	(Mark 4)	UK
*LCT(5)	(Mark 5)	US
*LCT(6)	(Mark 6)	US
LCT(8)	(Mark 8)	UK
LCT(9)	(Mark 9)	UK
*LCV	Landing Craft, Vehicle	US
LCV(2)	(Mark 2)	UK
*LCVP	Landing Craft, Vehicle, Personnel	US
Z-Lighter		UK

SUPPORT AND COMMAND CRAFT

		Builder
LBF	Landing Barge, Flak	UK
LCA(HR)	Landing Craft, Assault (Hedgerow)	UK
*LCC(1)	Landing Craft, Control—(Mark 1)	US
*LCC(2)	(Mark 2)	US
LCC		
LCF(2)	Landing Craft, Flak—(Mark 2)	UK
LCF(3)	(Mark 3)	UK
LCF(4)	(Mark 4)	UK
LCG(M)	Landing Craft, Gun (Medium)	UK
LCG(L)(3)	(Large)—(Mark 3)	UK
LCG(L)(4)	(Large)—(Mark 4)	UK
LCH	Landing Craft, Headquarters	UK
LCI	Landing Craft, Infantry (Gunboat)	US
LCN	Landing Craft, Navigational	UK
LCP(SY)	Landing Craft, Personnel (Survey)	UK
*LCS(S)(1)	Landing Craft, Support (Small)—(Mark 1)	US
	(Small)—(Mark 2)	US
LCS(S)(2)	(Mark 2)	US
LCS(M)(1)	(Medium)—(Mark 1)	UK
LCS(M)(2)	(Mark 2)	UK
LCS(M)(3)	(Medium)—(Mark 3)	UK
LCS(L)(1)	(Large)—(Mark 1)	UK
LCS(L)(2)	(Large)—(Mark 2)	UK
*LCS(L)(3)	(Large)—(Mark 3)	US
LCS(R)	(Rocket)	UK
LCT(A)	Landing Craft, Tank (Armored)	UK
LCT(R)	Landing Craft, Tank (Rocket)	UK
PGM	Motor Gunboat	US

AMPHIBIOUS VEHICLES

LVT(1)	Landing Vehicle, Tracked—(Mark 1)	
*LVT(2)	(Mark 2)	US
*LVT(3)	(Mark 3)	US
*LVT(4)	(Mark 4)	US
*LVT(A)(1)	(Armored)—(Mark 1)	US
*LVT(A)(2)	(Armored)—(Mark 2)	US
LVT(A)(3)	(Armored)—(Mark 3)	US
*LVT(A)(4)	(Armored)—(Mark 4)	US

AMPHIBIOUS VEHICLES—Con.

		Builder
*DUKW	2 1/2-Ton, 6 x 6, Amphibian Truck	US
*JEEP	1 1/4-Ton, 4 x 4, Amphibian Truck	US
TERRAPIN 1		UK
TERRAPIN 2		UK

REPAIR AND SUPPLY CRAFT

LBE	Landing Barge, Emergency Repair	UK
LBK	Landing Barge, Kitchen	UK
LBO	Landing Barge, Oiler	UK
LBW	Landing Barge, Water	UK
*LCE	Landing Craft, Emergency Repair	UK

SHIPS

LSB	Landing Ship, Bombardment	UK
LSC	Landing Ship, Carrier (Derrick-Hoisting)	UK
*LSD	Landing Ship, Dock	US
LSE	Landing Ship, Emergency Repair	UK
LSF	Landing Ship, Fighter Direction	UK
LSG	Landing Ship, Gantry	UK
LSH	Landing Ship, Headquarters	UK
*LSI(H)	Landing Ship, Infantry (Hand-Hoisting)	UK
LSI(S)	(Small)	UK
LSI(M)	(Medium)	UK
LSI(L)	(Large)	UK
*LSM	Landing Ship, Medium	UK
LSP	Landing Ship, Personnel	UK
LSS	Landing Ship, (Stern-chute)	UK
LST	Landing Ship, Tank	UK
LST(1)	(Class 1)	UK
*LST		US
LST(3)	(Class 3)	UK
LST(4)	(Class 4)	UK
LSV	Landing Ship, Vehicle	US
AGC	Amphibious Force Flagship	US
*APc	Coastal Transport (Small)	US
*APD	High Speed Transport (Destroyer)	US
*ARL	Landing Craft, Repair Ship	US

LCP(1)	Landing Craft, Personnel (Mark 1)
LCP(2)	(Mark 2)
LCP(N)	(Nested)
LCP(U)	(Utility)
LCW	Landing Craft (Air-Propelled)
LCP(S)	Landing Craft, Personnel (Small)
LCP(M)	(Medium)
*LCA	Landing Craft, Assault
*LCP(L)	Landing Craft, Personnel (Large)
*LCP(R)	(Ramped)
LCI(S)	Landing Craft, Infantry (Small)
*LCI(L)	(Large)
LCR(S)	Landing Craft, Rubber (Small)
LCR(L)	(Large)

*Major operational types.

LANDING CRAFT, PERSONNEL (MARK 1) LCP(1)

Operational use Small wooden craft to be carried on British destroyers and towed by LCP(2).
 Dimensions 20'0" x 6'0"; weight is 2,000 lb. light.
 Capacity 18 men, 2 crew.
 Speed One can be towed @ 5.5 kts.; 2 @ 4.8 kts.

UK

LANDING CRAFT, PERSONNEL (MARK 2) LCP(2)

Powered landing craft carried on destroyers' davits.
 Dimensions 25'6" x 6'3".
 Weight 4,000 lb. (light).
 Capacity 18 men, 3 crew.
 Endurance 30 miles @ 10 kts. (max. loaded speed).
 Propulsion One 65-hp. Ford V-8 engine.
 Fuel 30 imperial gallons gasoline.

UK

Photo of the LCP(N). LCP(1) and (2) are still building in Levant.



LANDING CRAFT, PERSONNEL (NESTED) LCP(N)

Operational use Small personnel carriers designed to be stacked in nested arrangement on the deck of transports. Capable of surf and inshore operation.
 Description Constructed entirely of plastic skin and wooden ribs. Formerly designated LCP(P), Plastic. Only 12 experimental craft have been built.
 Endurance Limited in heavy surf because of motor flooding.
 Speed 10 to 12 m. p. h. (designed). Dimensions Length, 32'0" o.a.;
 Draft 10" loaded (designed). beam, 7'10".
 Weight 1,400 lb. w/o engine. Capacity 13 troops, 2 crew.
 Propulsion 4-cylinder, 60-hp. portable outboard motor; 6 oars carried.

US

LANDING CRAFT, PERSONNEL (UTILITY) LCP(U)

(British Staff Requirements)

Operational use To land forces, not under fire, in surf or on rocky coast; also to serve as general utility craft.
 Description Similar to the LCP(L); designed to be carried on davits or on decks.
 Capacity 30 troops fully equipped.
 Weight 10 tons (unloaded).
 Draft 3'6" max. (aft).
 Speed 15 kts. designed, 12 knots minimum top speed.
 Endurance 150 miles @ max. speed (loaded).
 Armament None.
 Crew 4.

UK

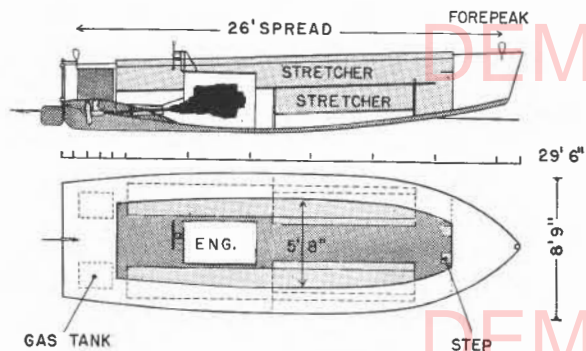
LANDING CRAFT, AIR PROPELLED LCW

(British Staff Requirements)

Operational use To transport troops and equipment over shallow water, through swamps and other difficult water areas. British design for Far East operations.
 Description An airscrew-propelled shallow-draft craft fitted with a folding bow-ramp. These craft may be nested on deck or at davits.
 Capacity 35 troops or 5 tons cargo.
 Dimensions Cargo space 31' x 9'. Draft 18" max.
 Speed 10 knots (loaded).
 Endurance 200 miles @ 10 knots (loaded).
 Armament None.
 Armor Portable bulkheads to engine casing.

UK

LCP(S) LANDING CRAFT, PERSONNEL (SMALL)



Operational use For raids or second-echelon troop landings. Debarcation is by portable bow ladders shown secured on deck in photos. Some units have been equipped as water ambulances (drawing), carry 6 litters instead of benches. In all other craft 4 litters can be carried.

Description Small wooden craft transported on ships' davits or on deck.

Capacity 20 fully equipped, 25 unequipped men; or 6 litters and 10 walking wounded.

Endurance 120 miles @ 8 kts. Speed, 8 kts. max. (loaded). @ 2,100 r.p.m.

Dimensions Length, 29'6" o. a. Beam, 8'9".

Displacement Light, 3 tons. Draft, 1'4" (mean) to Loaded, 5½ tons. 1'9" (mean).

Armament One .303 Lewis gun. Crew, three.

Propulsion One 60 or 65-hp. Chrysler engine; single screw.

Fuel 100 imperial gallons gasoline.

UK

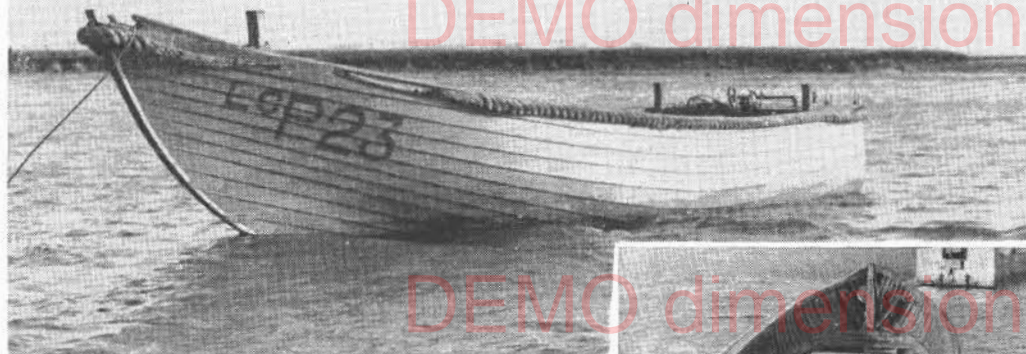


Photo shows troop benches, propeller tunnel. ▶

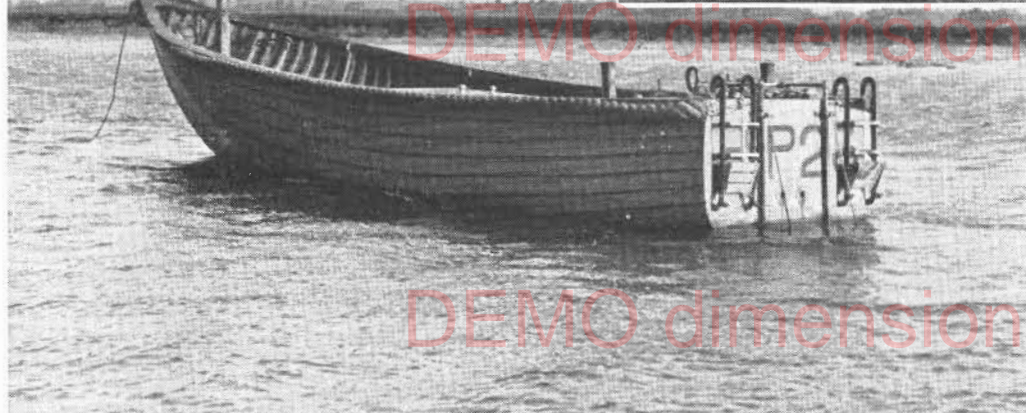
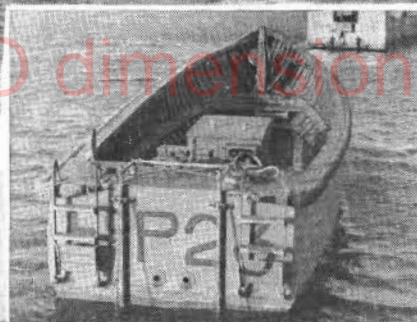


ONI 226

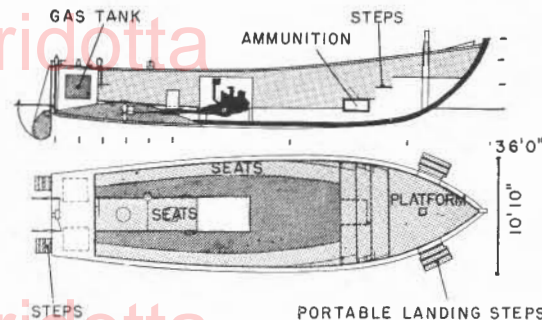
Publication and Distribution Branch—Division of Naval Intelligence



Note single skin plank construction.



LANDING CRAFT, PERSONNEL (MEDIUM) LCP(M)



PORTABLE LANDING STEPS

- Operational use** For operations against rocky coasts and similar terrain which restrict the use of other personnel carriers.
- Description** Small wooden craft adapted from the standard work-launch design. Disembarkation is by 4 portable ladders over bow and stern.
- Capacity** 20 fully equipped troops.
- Endurance** 112 miles @ 7½ kts. Speed, 7½ kts. max. (loaded) @ 2,800 r.p.m.
- Dimensions** Length, 38'11" o. a. (rudder up); beam, 10'1".
- Displacement** Light, 4½ tons. Draft, 1'6" for'd, 1'7" aft.
Loaded, 7¼ tons. 2'1" for'd, 1'7" aft.
- Armament** One .303 cal. Lewis gun; protected ammunition box for'd.
- Crew** One officer per 3 craft, 3 men.
- Propulsion** One Scripps Ford V-8, 65-hp. engine; single screw.
- Fuel** 100 imperial gallons gasoline in 2 linatex tanks.

UK



DEMO dimensione ridotta



DEMO dimensione ridotta

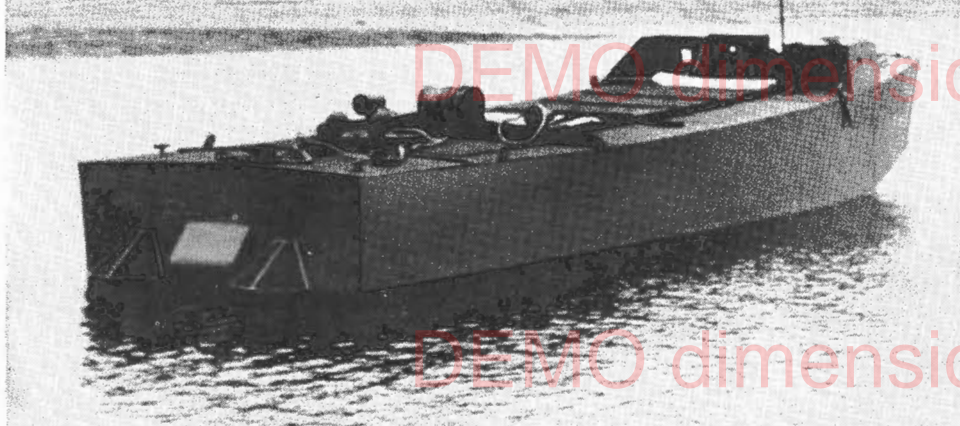
LCA Variations in the 1/4" steel doors and the bow gunners' cockpit are apparent in the photos. Note the general similarity of this design to the LCVP and LCP(R).



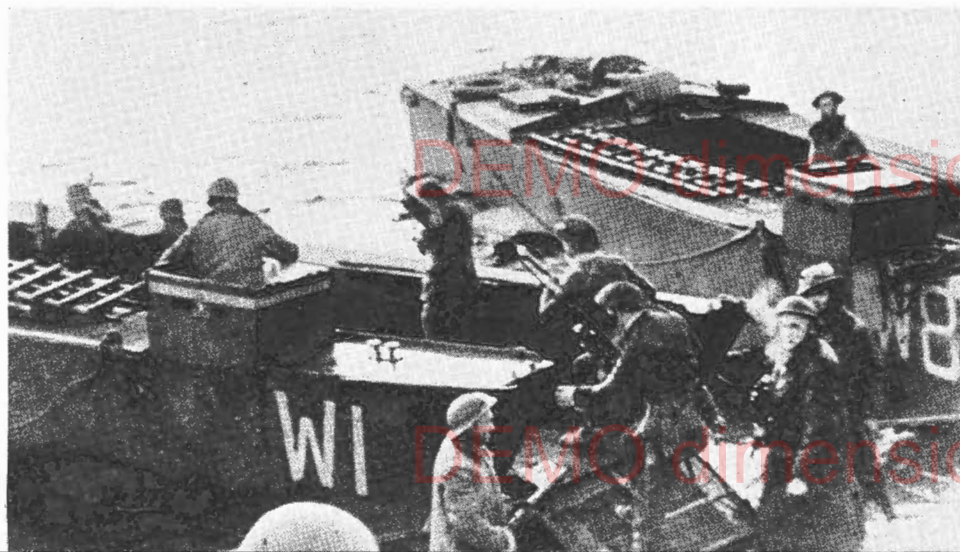
DEMO dimensione ridotta



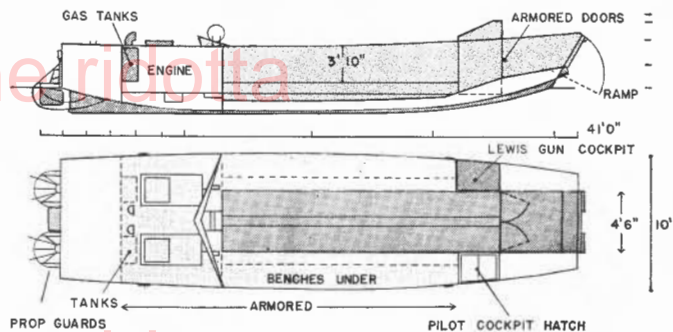
DEMO dimensione ridotta



Notice canvas hold-cover and scaling ladders in illustrations.

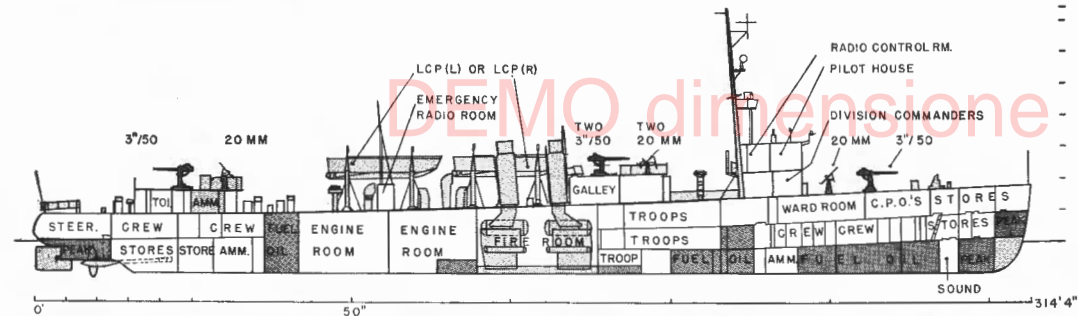


LANDING CRAFT, ASSAULT LCA



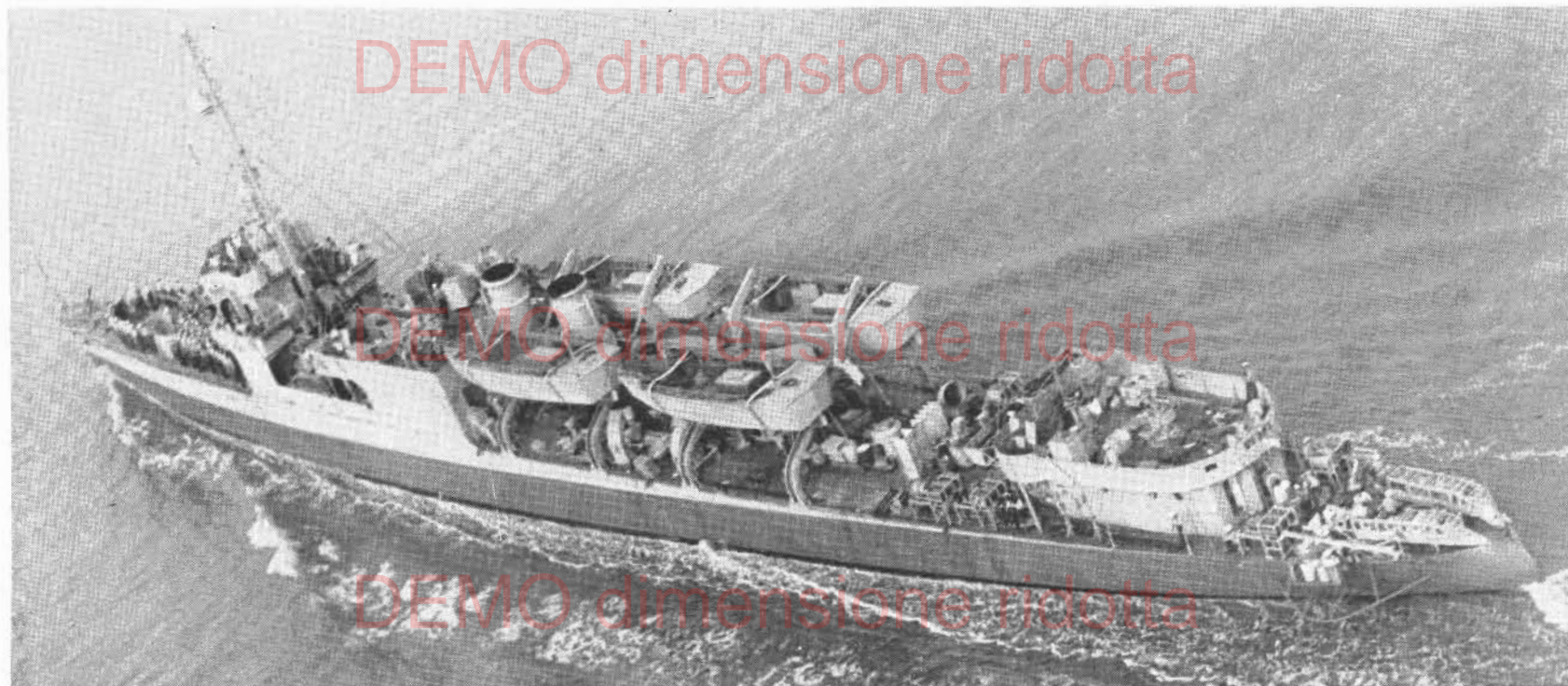
- Operational use For raiding operations or large-scale landings of troops from transports.
- Description The first British standard assault type, still being built in the Pacific Area. This type is standard equipment on most of their transports, usually carried on davits. The same design has been adapted to the LCS(M) and LCA(HR).
- Capacity 35 troops and 800 lb. equipment. Troop space 18' x 8'10''.
- Endurance 50-80 miles @ 7 kts. Speed, 6 kts. (loaded), 10 kts. (light).
(loaded), 65 miles @ full speed, 100 miles in special craft.
- Dimensions Length, 41'6'' with prop. guards. Beam, 10'0''.
- Displacement Light, 9 tons. Draft, 1'1'' for'd, 1'9'' aft.
Loaded, 13 tons. 1'9'' for'd, 2'3'' aft.
- Armament 1 Bren gun in port cockpit, 2-.303 Lewis guns, 2-2'' mortars are being fitted aft.
- Armor 10-lb. DIHT to bulkheads and hull sides, 7.8-lb. DIHT to hold decks (see drawing); 10-lb. parapets can be fitted.
- Crew 1 officer per 3 craft, 4 men.
- Propulsion Two 65-hp. Ford V-8 engines; twin screws.
- Fuel 64 imperial gallons gasoline; some units carry 98 gallons.
- ◀ This and upper left photo on opposite page are older type LCA.

HIGH-SPEED TRANSPORTS (DESTROYERS) APD



- Converted "flush-deck" destroyers designed to accommodate raiding parties and land them by small craft. Nineteen are now in service, others are contemplated for conversion.
- Dimensions 314'4" o.a. x 31'8"; 11'11" plus 4' sound dome (max. draft).
- Displacement 1,060-1,090 tons; 1,700 (loaded).
- Capacity Four LCP(L) or LCP(R) and one Marine rifle company. Over 200 men have been successfully accommodated. 140-148 berths.
- Armament Four 3" .50-cal. DP; five 20-mm., 6 D. C. projectors are carried.
- Speed 23 kts. (max.). Crew, 112.

US



APc COASTAL TRANSPORT (SMALL)

Small wooden transports designed for use around advance bases, in raiding parties, or light-draft conditions in conjunction with large landing operations. Many of these craft were previously used as AMc, coastal minesweepers. The type illustrated is a new class, designed for the purpose.

Capacity Troops, 2 officers, 60 enlisted; or 17 tons of cargo in forward hold.

Dimensions 103' (wl) x 21'3" x 11' draft.

Displacement 238 tons.

Endurance 3,095 miles @ 9.5 knots (cruising).

Propulsion One 400-h.p. direct-drive Diesel.

Armament Four 20-mm.

Crew 3 officers, 17 enlisted.

US

