

TENDERS



World War I types p. 4-5



Large p. 6-7



Small p. 8

PASSENGER



World War I types p. 9



Maritime types p. 10-11



Miscellaneous, 2 stacks p. 12-13



Miscellaneous, 1 stack p. 14-15



Miscellaneous p. 16

U. S. FLEET TRAIN—

Division of Naval Intelligence—Identification and Characteristics Section

AD Destroyer Tenders

		Page
2	MELVILLE	28
3, 4	DOBBIN Class	4
9	BLACK HAWK	28
11, 12	ALTAIR Class	28
14, 15, 17-19	DIXIE Class	7
16	CASCADE	10
20, 21	HAMUL Class	22

AS Submarine Tenders

3	HOLLAND	5
5	BEAVER	16
11, 12, 15 19	FULTON Class	7
13, 14	GRIFFIN Class	22
20	OTUS	26
21	ANTEAUS	16

AR Repair Ships

1	MEDUSA	5
3, 4	PROMETHEUS Class	28
5-	VULCAN Class	7
9, 12	DELTA Class	22
10	ALCOR	14
11	RIGEL	28

ARH Hull Repair Ships

1	JASON	7
---	-------	---

AGC Operations and Command Headquarters Ships

1-3	APPALACHIAN Class	19
4	ANCON	11

AV Seaplane Tenders

1	WRIGHT	9
4, 5	CURTISS Class	6
8	TANGIER	23
9, 10	POCOMOKE Class	23

AVP Seaplane Tenders, Small

10-	BARNEGAT Class	8
-----	----------------	---

AGP Motor Torpedo Boat Tenders

6-	OYSTER BAY Class	8
----	------------------	---

AP Troop Transports

	Page	
6	BURROWS	14
7	WHARTON	9
21, 22	WAKEFIELD Class	12
23	WEST POINT	13
24	ORIZABA	13
29	U. S. GRANT	14
31, 32	CHATEAU THIERRY Class	9
33	REPUBLIC	14
41	STRATFORD	14
54, 61	HERMITAGE Class	13
63	ROCHAMBEAU	12
67	DOROTHEA L. DIX	25
69-71, 76	ELIZ. STANTON Class	23
72	SUSAN B. ANTHONY	15
75	GEMINI	17
77	THURSTON	20
110-	"GENERAL" Class	10

APA Attack Transports

1, 11	DOYEN Class	30
2, 3, 12, 14-17	HARRIS Class	9
4, 5	McCAWLEY, BARNETT	15
6-9	HEYWOOD Class	15
10, 23	HARRY LEE Class	14
13	J. T. DICKMAN	9
18-20, 29, 30	PRESIDENT Class	10
21, 28, 31, 32	CRESCENT CITY Class	11
25-27, 31	MIDDLETON Class	11
33-48	BAYFIELD Class	24
49-51	ORMSBY Class	20
52-56	SUMTER Class	24
89, 90	FUNSTON Class	26

APH Wounded Evacuation Transports

1-3	TRYON Class	25
-----	-------------	----

AH Hospital Ships

1, 9	RELIEF Class	5
5	SOLACE	16
10	CHAUMONT	9
11	KENMORE	9

AK Cargo Ships

		Page
13, 15-17	CAPELLA Class	17
14	REGULUS	17
41	HERCULES	25
42, 43	MERCURY Class	19
46	PLEIADES	27
47	AQUILA	27
48	PEGASUS	27
49	SATURN	27
51	ARIES	17
63	ASTERION	
70-79, 90-97, 99-108	CRATER Class	25
80-89	ENCELADUS Class	36
98	AURIGA	26

AKA Attack Cargo Ships

1, 6-8, 11	ARCTURUS Class	18
2-4, 12-14	PROCYON Class	21
5	FOMALHAUT	26
9	ALHENA	26
10	ALMAACK	25
15-20	ANDROMEDA Class	19
21-		35

AKS General Stores Issue Ships

1	CASTOR	19
3	ANTARES	17
4	POLLUX	20

AE Ammunition Ships

1, 2	PYRO Class	4
3-9	LASSEN Class	21
10	SANGAY	26

AF Provision Storeships

1	BRIDGE	5
7-9	ARCTIC Class	17
10	ALDEBARAN	19
11	POLARIS	18
12, 13, 15, 17, 21, 22	MIZAR Class	16
14	URANUS	29
16, 18	PASTORES Class	16

19	ROAMER	27
20	PONTIAC	27
23, 25	CYGNUS Class	28
24	DELPHINUS	28
26	OCTANS	16

AG Miscellaneous Auxiliaries

1	HANNIBAL	29
12	GOLD STAR	17
29	BEAR	29
30	BOWDITCH	14
31	ARGONNE	9
32	SUMNER	29
33	KAULA	35
36, 39, 40	MANASQUAN Class	17
42, 45, 46-48, 66	CAMANGA Class	29
43	MAJABA	29
44	MALANAO	35
49	ANACAPA	8

AO Oilers

3-6	KANAWHA Class	31
2	MAUMEE	31
9, 11-13, 18-21	PATOKA Class	31
15, 16	KAWEAH Class	31
22-32, 51-64	CIMARRON Class	32
34-35	CHICOPEE Class	33
36-40, 48, 69-72	KENNEBEC Class	32
41-44, 47	MATTAPONI Class	33
45	BIG HORN	34
46	VICTORIA	36
49, 50	SUAMICO Class	34
65, 67, 68, 73-	PECOS Class	33
66	ATACOSTA	34

AOG (YO) Gasoline Tankers

	Miscellaneous	35, 36
--	---------------	--------

APM Mechanized Artillery Transport

9	LAKEHURST	35
---	-----------	----

AKV Cargo Ship—Aircraft Ferry

1, 2	KITTY HAWK Class	35
------	------------------	----

CARGO



World War I types p. 17



C2 Conversions p. 18-21



C3 Conversions p. 22-23



Miscellaneous Maritime types p. 24-26



Miscellaneous p. 27-30

ENGINES AFT



World War I types p. 31



Navy—Maritime types p. 32-33



Miscellaneous p. 34-36

WORLD WAR I TENDERS—AD • AR • AS • AE • AF • AH

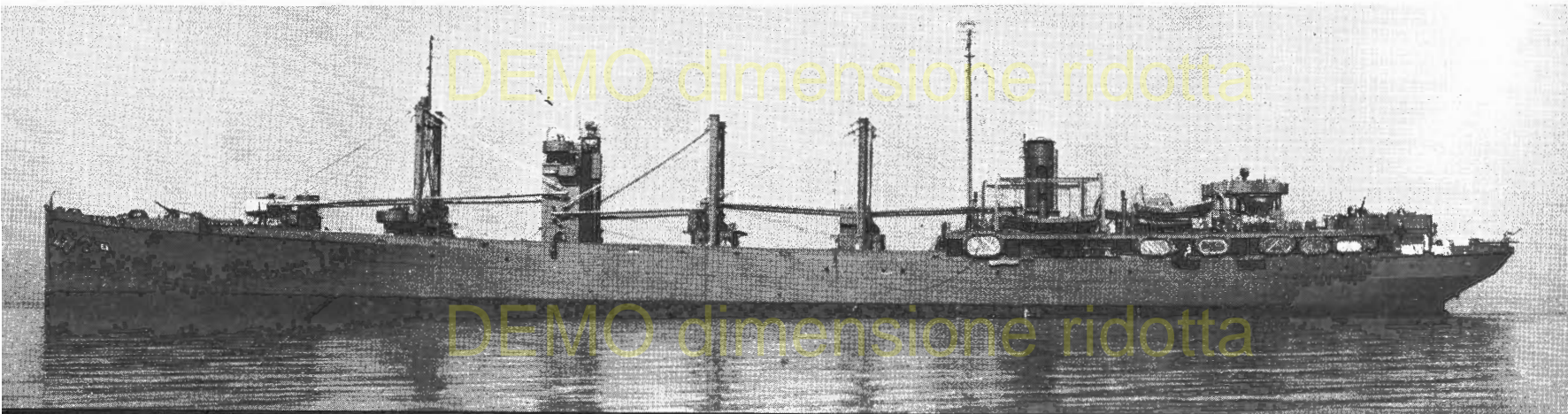
Division of Naval Intelligence—Identification and Characteristics Section

The first Navy-built Train; originally one design. Formed the basis of the peacetime tender fleet.



DOBBIN Class—AD 3, 4 ▲ WHITNEY 4/17/42

PYRO Class—AE 1, 2 ▼ PYRO

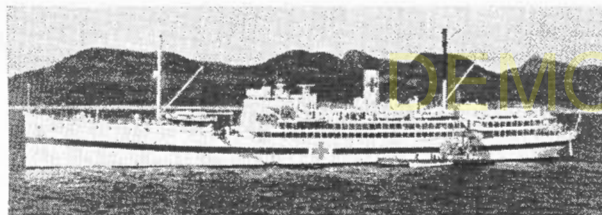


▼ HOLLAND—AS 3-4/22/43



RELIEF Class—AH 1,9 ▼ RELIEF

▼ BRIDGE—AF 1-8/8/42



▼ MEDUSA—AR1-2/15/43



LARGE TENDERS — AD • AR • AS • AV

Division of Naval Intelligence—Identification and Characteristics Section

Based on one general design and adapted to fulfill each specific Train function



CURTISS Class—AV 4, 5 all photos ALBEMARLE-4/43-6/10/43



ONI 54-A • RESTRICTED

9/5/43

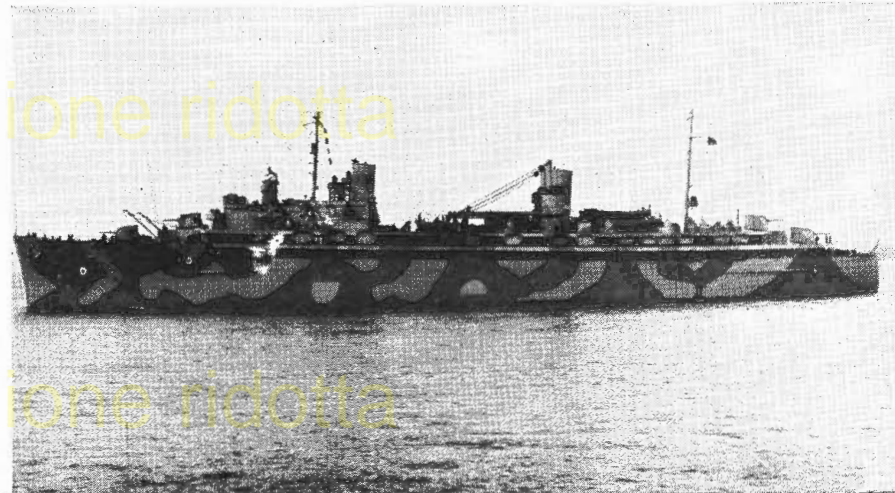
LARGE TENDERS

FULTON Class—AS 11, 12, 15-19 ▼ SPERRY-7/24/42



DIXIE Class—AD 14, 15, 17-19 ▼ PRAIRIE

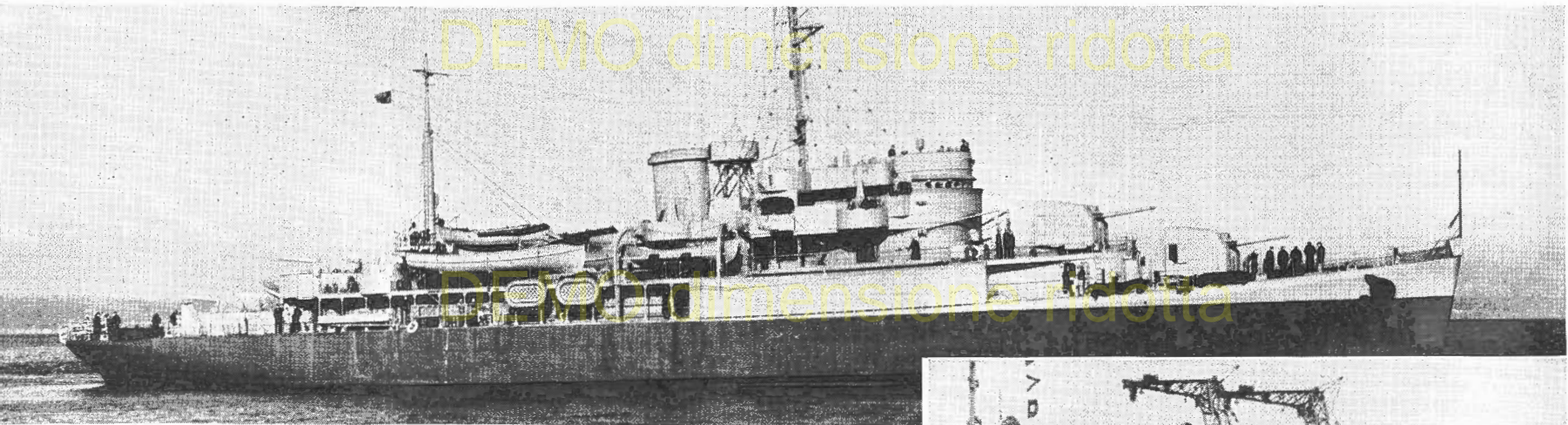
VULCAN Class—AR 5-8 (ARH 1 similar) ▼ VULCAN-6/10/42



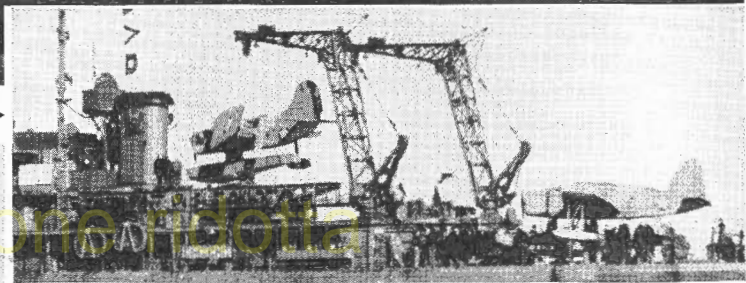
SMALL TENDERS—AVP • AGP • AG

Division of Naval Intelligence—Identification and Characteristics Section

A multipurpose design employed as seaplane and small craft tenders, and in escort and patrol duties. Note the variation in aircraft-handling facilities and armament



BARNEGAT Class—AVP ▲ SAN PABLO—3/9/43 ▼ MATAGORDA—4/11/42 ABSECON—1/17/43 ►



ONI 54-A • RESTRICTED 9/5/43

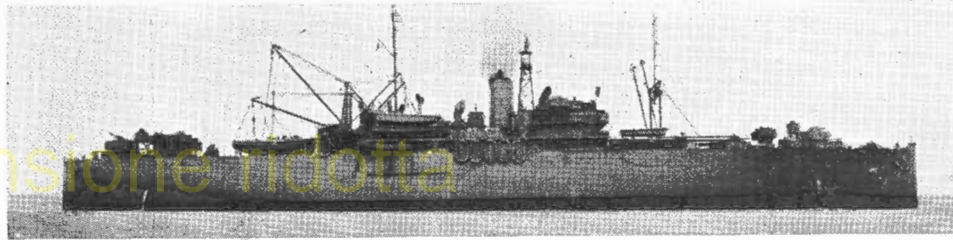
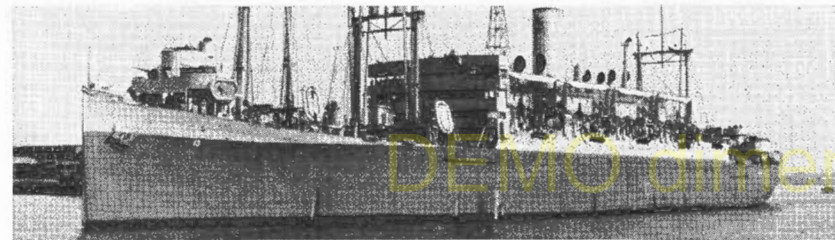
PASSENGER—WORLD WAR I TYPES—AP • APA • AH • AV

CHATEAU THIERRY Class—AP 31, 32, AG 31, AH 10—USSB "HOG ISLAND"ers ▼ ST. MIHIEL—7/5/43 Sister ships SOMME, CAMBRAI are Army-operated



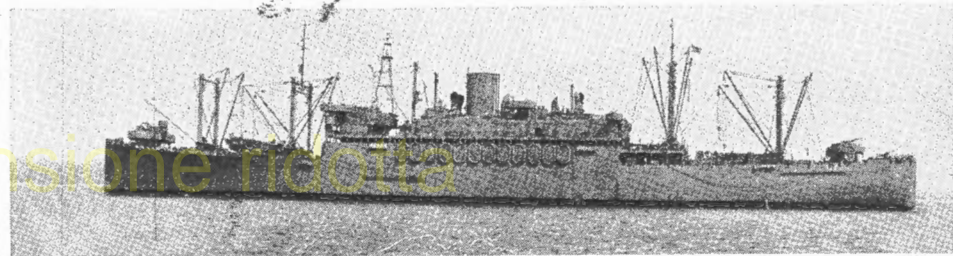
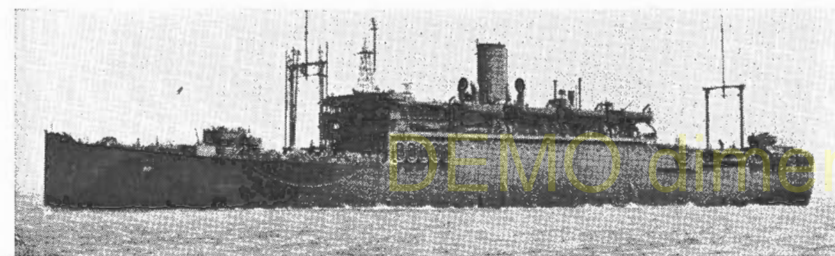
▼ J. T. DICKMAN—4/8/43

▼ WRIGHT—AV 1—7/13/43 converted from "HOG ISLAND 440" type



◆ WHARTON Class—AP 7, APA 13 A variation of the HARRIS Class

▼ HARRIS Class—APA 2, 3, 12, 14-17 USSB "STATE" type—AH 11 similar

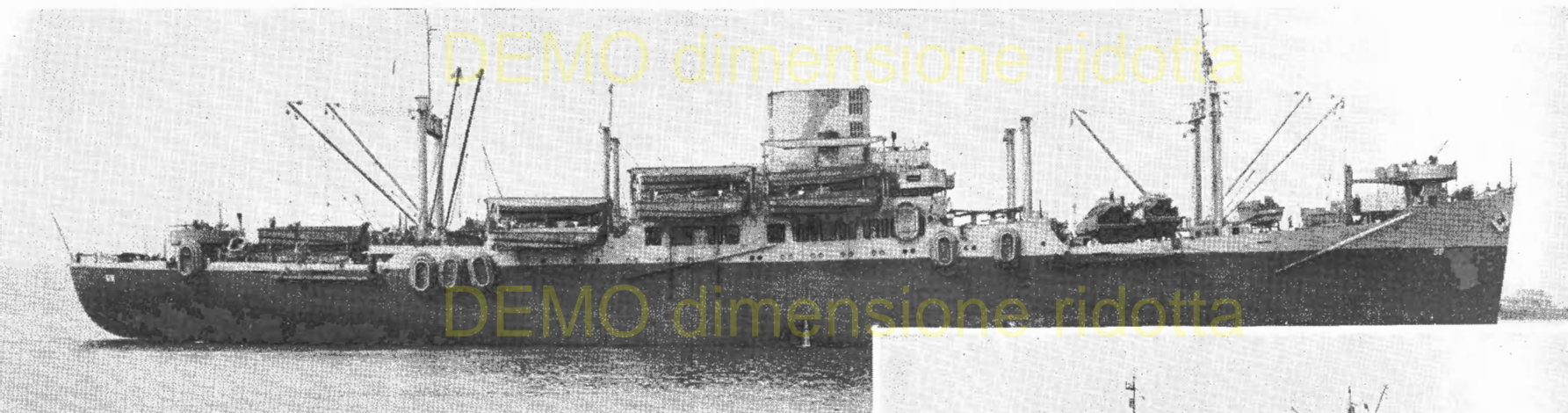


PASSENGER—MARITIME COMMISSION TYPES—AP • APA • AD • AGC

Division of Naval Intelligence—Identification and Characteristics Section

"PRESIDENT" Class—APA 18-20, 29, 30 C3-P & C Type

▼ THOMAS STONE-9/15/42



"GENERAL" Class - AP 110 P2-S2-R2 design ▼ CASCADE-AD 16-4/28/43 ►

