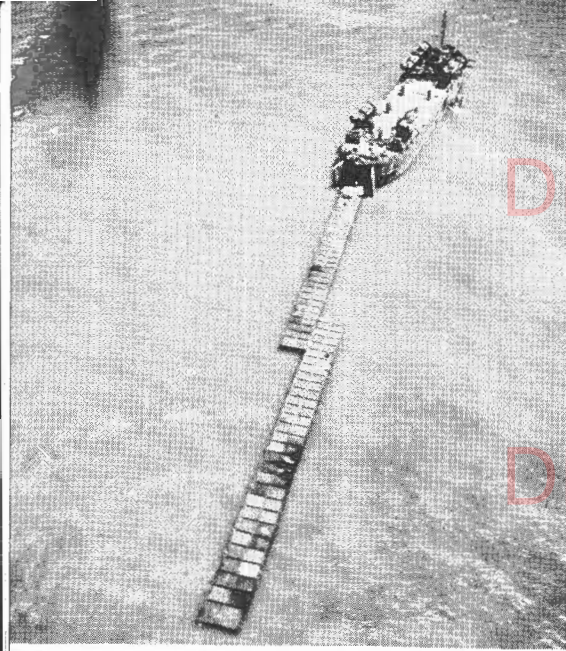


LST—Landing Ship for Tanks—Length o. a. 327'9".

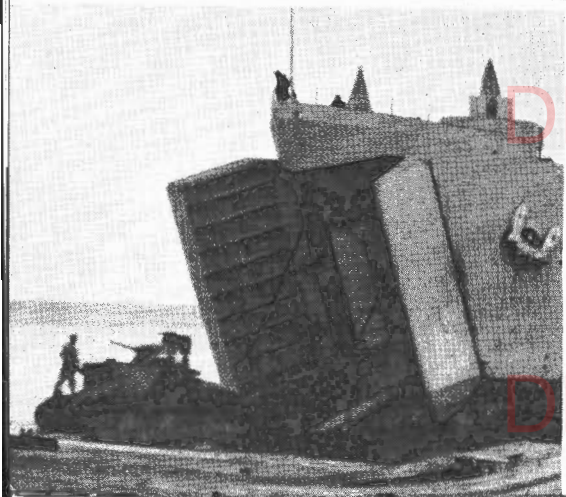


DEMO dimensione ridotta

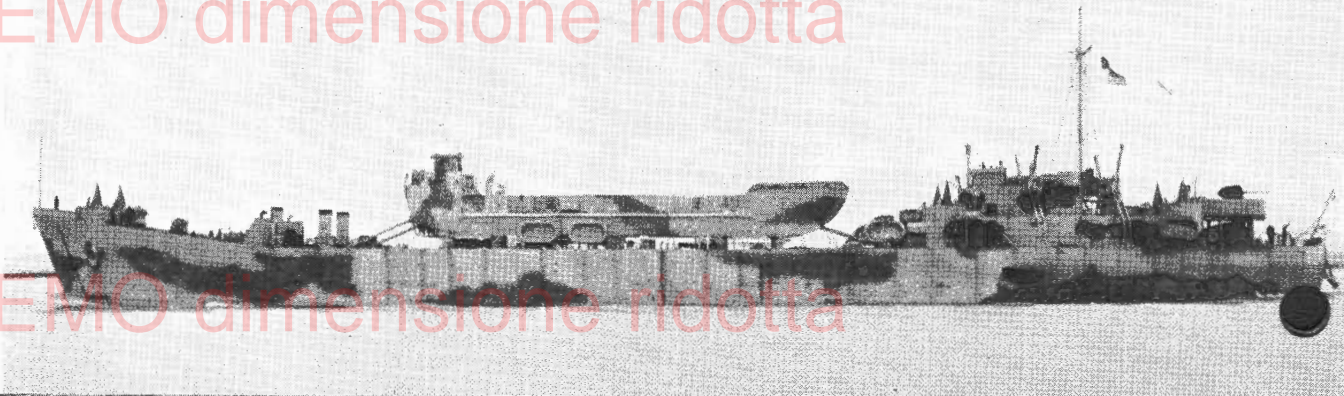


DEMO dimensione ridotta

The largest of our "beaching" units, these ocean-going vessels are often seen carrying LCT or other equipment as deck cargo. Tanks are landed through bow gates after beaching. Often, in order to reach inaccessible points, float extensions are employed. Variations of this design are the ARB—Battle Damage Repair Ship; ARL—Auxiliary Repair Ship; AGP—Auxiliary Motor Torpedo Boat Tender.

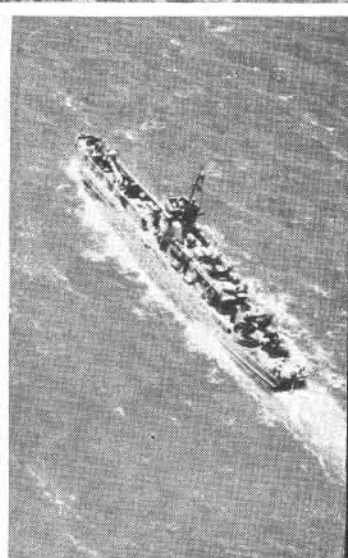


DEMO dimensione ridotta



DEMO dimensione ridotta





ONI 54-LC • RESTRICTED

Division of Naval Intelligence—
Identification and Characteristics Section

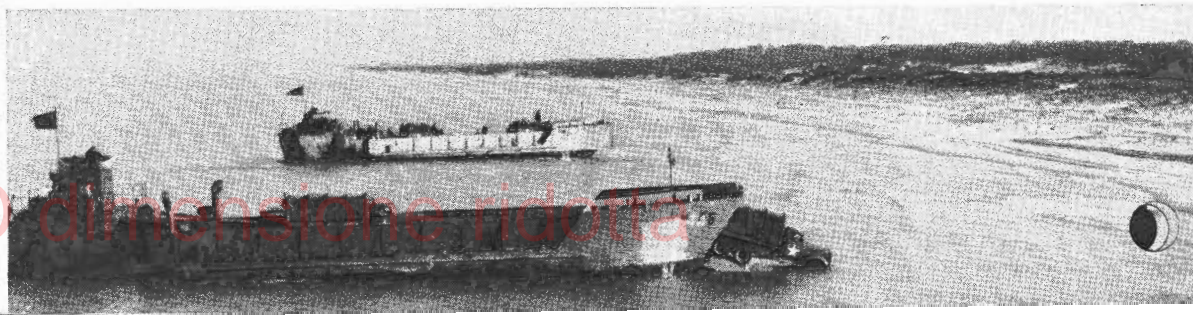
LCT-Mk V



DEMO dimensione ridotta

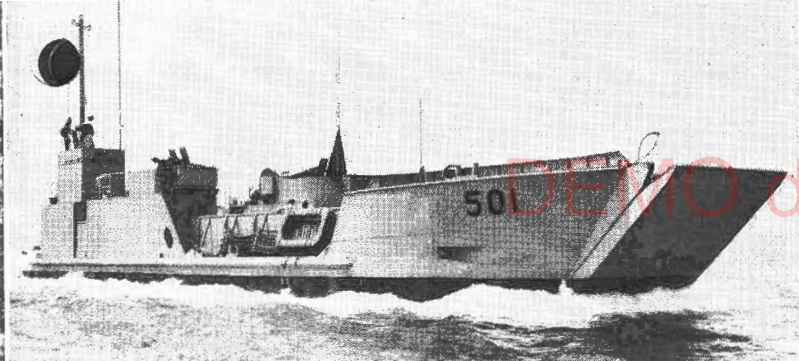


DEMO dimensione ridotta



DEMO dimensione ridotta



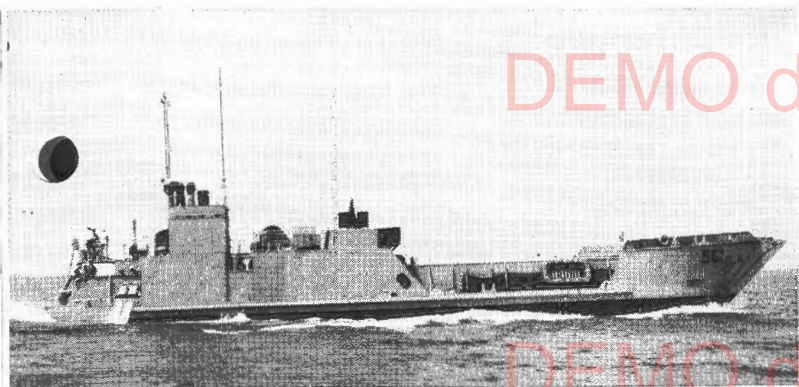


LCT-Mk VI—Landing Craft for Tanks.

Length o. a. 112' (Mark V left), 105' (Mark VI below).

These medium tank-landing craft are often seen transported on LST's or in sections on AP's and AK's. They are the largest of the bow-ramp types. Note the low, barge-like appearance and the wide wake, characteristics of these and smaller craft.

ONI 54-LC RESTRICTED Division of Naval Intelligence—
Identification and Characteristics Section
Issued 8-4-43



DEMO dimensione ridotta



DEMO dimensione ridotta



DEMO dimensione ridotta

DEMO dimensione ridotta

LCS—Support Landing Craft.

Length o. a.—36'.

These craft are employed to provide firepower support in landing operations. Note similarity to the LCC.

LCC—Control Landing Craft.

Length o. a.—56'.

The tall antennae and masts illustrated fold down during high-speed maneuvers.

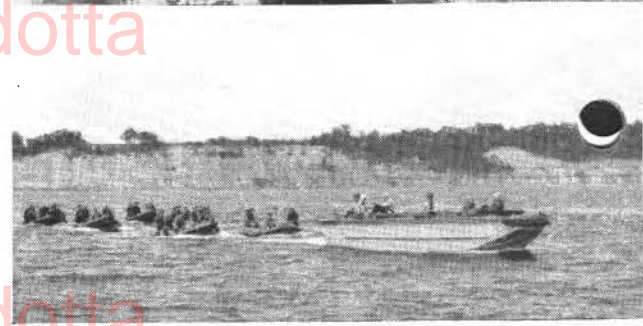


LCP—Personnel Landing Craft.

Length o. a. 36'.

This and the bow-ramp version (LCPR) are the standard assault boats. They are often seen being transported on AP's, AK's, and APD's, or as illustrated, towing a fleet of LCR's (Rubber landing rafts).

▼ LCS ►



▼ LCP

▲ LCPR

▲ LCP rowing LCR's.

▼ LCP

